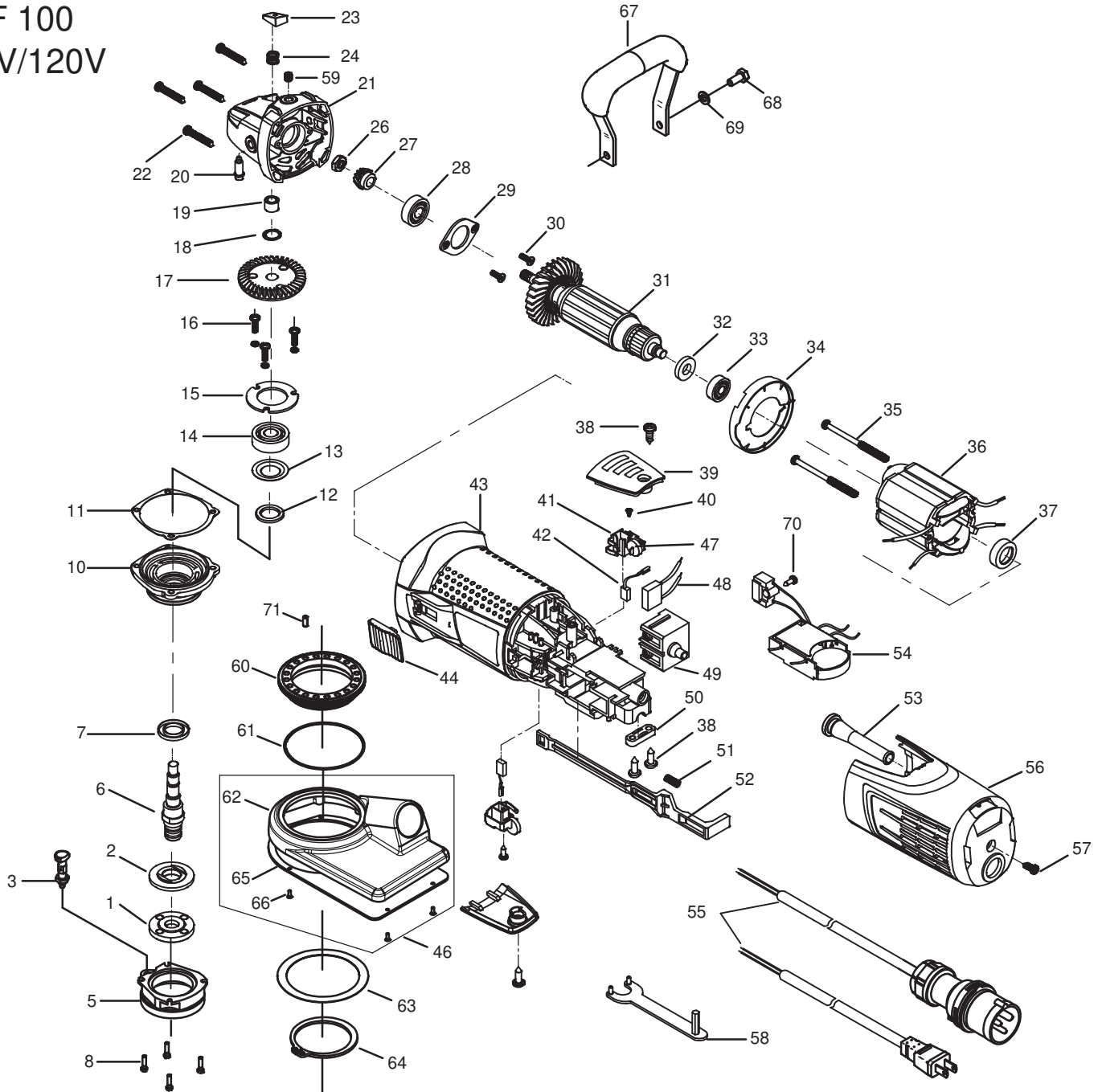


## Spare Parts List

EOF 100  
110V/120V



10/20

Valid from 2020

Subject to change

26533000-02



06533000  
**EOF 100 - 120V**

Version: 02

Dated: 24.05.2024

Pos.	Description	Item No.	pc.	Pos.	Description	Item No.	pc.
1	Clamp nut	66534001	1	44	Switch knob	66534044	1
2	Guide washer	66534002	1	46	Hood, compl.	7653464U	1
3	Snap bolt	76531587	1	47	Spring	66534047	2
5	Flange	76535586	1	48	Capacitor	66534048	1
6	Work spindle	66534006	1	49	Switch	80600502	1
7	Dust protection	66534007	1	50	Wire locking flange	66534050	1
8	Screw M4x16	80201450	4	51	Spring	66534051	1
10	Gearbox cover	76535405	1	52	Slider	66534052	1
11	Gearbox seal	66534011	1	53	Cable grommet	66534053	1
12	Felt ring 16,8x24x2	66534012	1	54	Electronic 110V/120V	76532280	1
13	Disc	66534013	1	55	Connecting cable 2x16 AWG 5m	80600085	1
14	Grooved ball bearing 6201 2RS	80410100	1	56	Cover	66534056	1
15	Bearing cover	66534015	1	57	Screw 3,9x16	80201115	1
16	Screw M4x10	80201201	3	58	Face spanner	66534058	1
17	Wheel	66534017	1	59	Threaded pin M8x8	80201427	1
18	Retaining ring 10x1	80201305	1	60	Adjusting ring	76534580	1
19	Needle sleeve HK0810	80420110	1	61	O-ring 85x1,78	83000000	1
20	Spindle lock	66534020	1	62	Suction hood	76534640	1
21	Gearbox housing	66534021	1	63	Shim ring 80x100x0,5	80201544	1
22	Screw 3,9x32	66534022	4	64	Retaining ring 80x2,5	80201543	1
23	Locking knob	66534023	1	65	Support plate	76561645	1
24	Spring	66534024	1	66	Screw 3x8	80201552	7
26	Nut M8	80201006	1	67	Handle	755A1590	1
27	Pinion	66534027	1	68	Spring lock washer 8	80201309	2
28	Grooved ball bearing 6000 2RSL C3	80410029	1	69	Screw M8x16	655A1035	2
29	Bearing cover	66534029	1	70	Screw 2,9x9,5	80201251	1
30	Screw M5x10	80201094	2	71	Locking pin 5x10	80200562	1
31	Rotor, compl. 110V/120V	66532031	1				
32	Magnet	66534032	1				
33	Grooved ball bearing 608 2RSL C3	80410026	1				
34	Air guiding washer	66534034	1				
35	Screw 3,9x74	66811029	2				
36	Stator, compl. 110V/120V	66532036	1				
37	Bearing cap	66534037	1				
38	Screw 3,9x13	80201261	4				
39	Brush holder cover	66534039	2				
40	Screw 2,9x6,5	80201142	2				
41	Brush holder, compl.	66534041	2				
42	Carbon brush 6x11x14	66534042	2				
43	Motor housing	66534043	1				

from year of manufacture 2020