

Repair and Tuning up kit

Type 2 2404 001R/001T

for Pneumatic Rotary Hammer Drill Type 2 2404 0010

ATEX Tool

 II 2G Ex h IIB T6 Gb

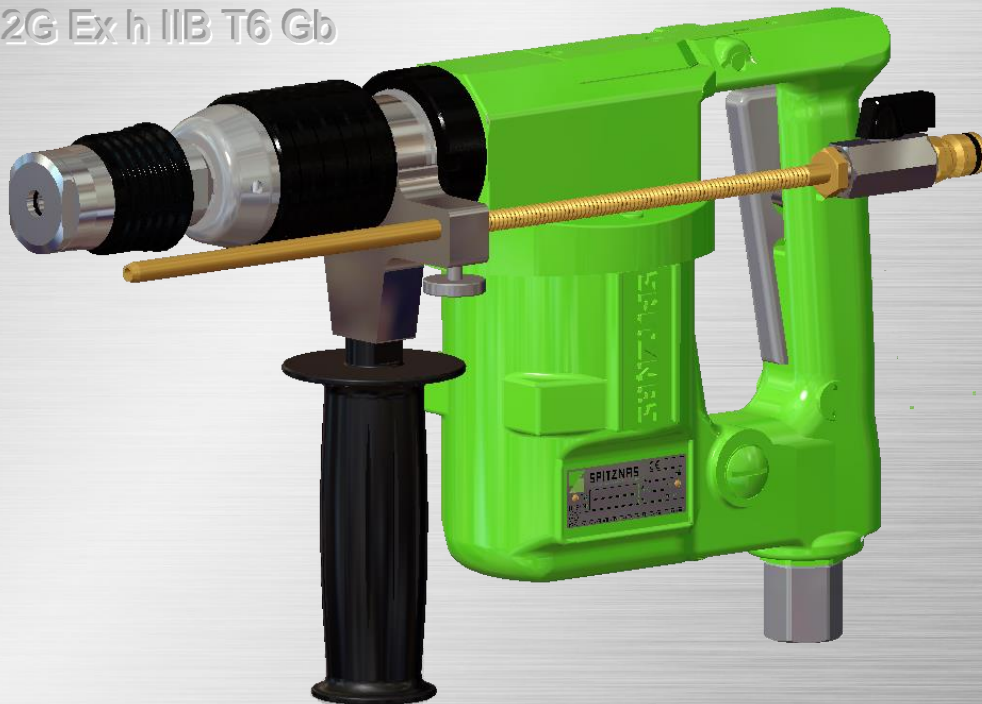


Illustration can differ from the original

Repair Manual and Spare Parts List

Repair

Disassembly

Disassembly and re-assembly should be done according to the sectional drawing only. Observe the safety instructions of the operation and maintenance manual.

The vanes should be changed in good time. They are considered worn if their width is less than 7 mm, see Fig. 6.

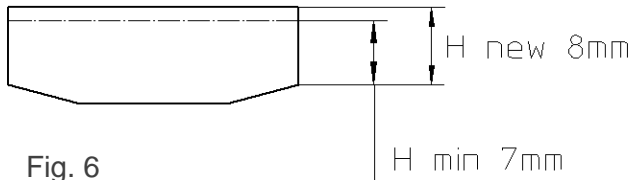


Fig. 6

Loosen screws item 21, pull out centring cover item 7 and inner motor parts. Pull end plates Items 40+48 with bearings items 41+47 and spacers Items 42+48 off the rotor item 45. Take off cylinder bushing item 43 and remove vanes item 38 from the rotor slots. Replace vanes when necessary.

Reassembly

Remove any oil and resin residue from the rotor slots before reassembly. The new vanes item 38 should fit easily into the slots. Basically, re-assembly is done in reverse order.

Caution!

If the bearings items 41+47 have been replaced, ensure correct spacing. If necessary, use new spacers items 42+ 48 and adjust the clearance Fig 7. The spacer should be fitted 0.04 – 0.05 mm in front of the end plate. To get the right clearance, it is necessary to press the inner bearing ring backlash-free towards the bushing item 4 respectively washer item 19. The chamfered edges of the spacers items 42 and 48 should point towards the plane surface of the rotor.

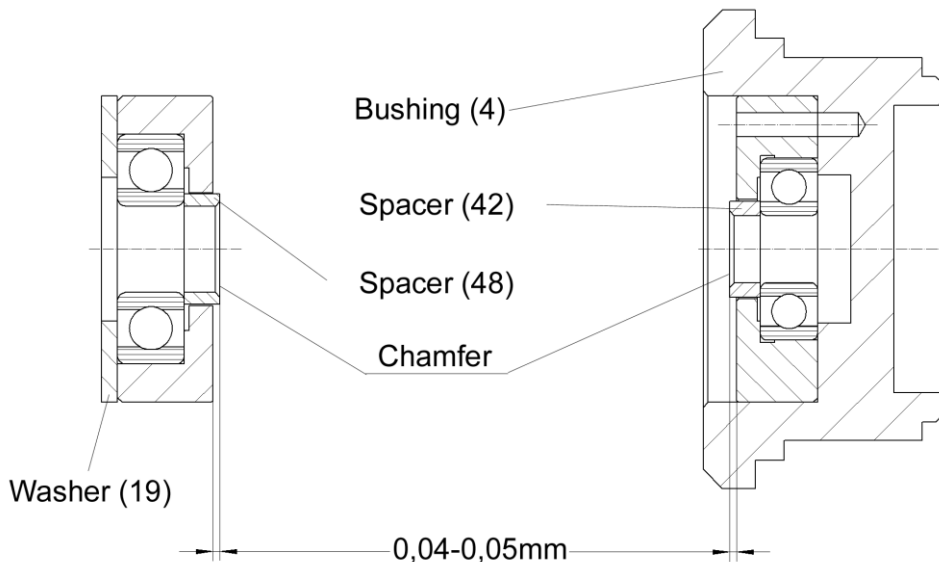


Fig. 7

Repair and Tuning up kit 2 2404 001R/ 001T

Re-assembly

Before starting the re-assembly check all parts for wear and damage and replace them if necessary. Generally replace wear parts always (O-rings, radial shaft sealings and bearings).

Grease the items 412, 417, 418, 419, 424, 425, 431, 433, 436, 437, 439, 443, 444, 445, 455 und 456 with grease 20g Spitznas part number 9 9902 0250 and oil the items 405, 408, 409, 413, 446 und 458 with oil SAE 5W to 10W.


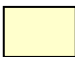
Use the mounting device Spitznas part number 2 2404 9810 for the assembly of the slipping clutch, assy. item 425. Use the testing device Spitznas number 2 2404 9840 for testing.

Fill the drive unit with 50 ml of oil Spitznas part number 9 9902 0020 before mounting the cover item 415.

Spare Parts

Only genuine Spitznas spare parts may be used. There is no warranty for damages and liability is disclaimed, if non-original spare parts and accessories are used.

2 2404 001T = 

2 2404 001R =  + 

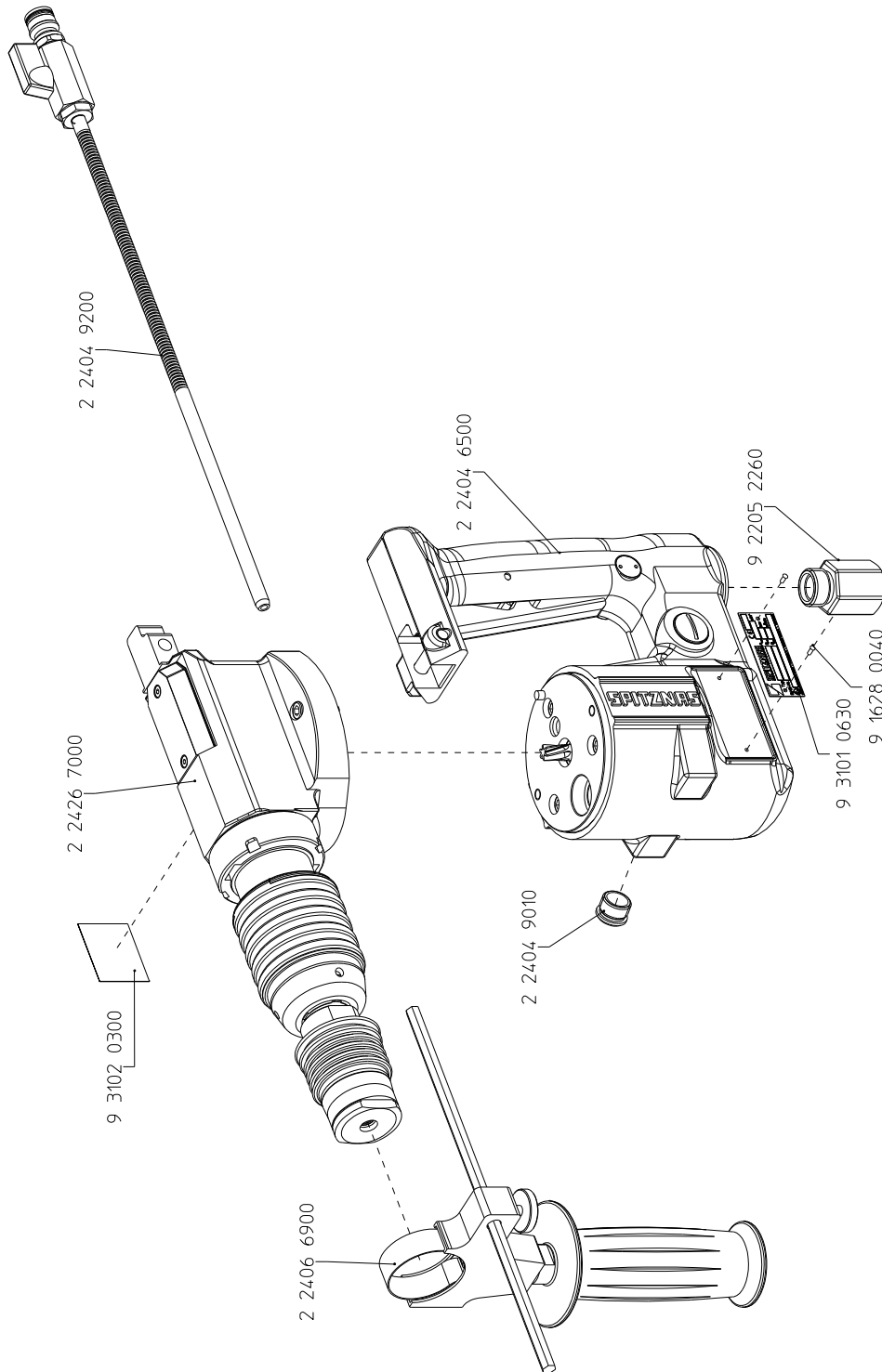
Spare Part List

Description:

Pneumatic Rotary Hammer Drill

Part and drawing number:

2 2404 0010



Spare Part List

Description:

Motor with handle

Part and drawing number:

2 2404 6500

Item	Qty.	Description	Part and Drawing no.	Remarks
1	1	Motor housing with handle	2 2404 6910	see extra list
4	1	Bushing	2 2404 1120	
5	1	O-ring	9 1901 3120	
6	1	O-ring	9 1901 4190	
7	1	Centring cover	2 2404 1940	
8	1	Cylinder pin	9 1619 1350	
11	1	Locking screw	9 1150 9020	
12	1	Locking screw	9 1150 9140	
13	1	Valve lever	2 2404 6800	
14	1	Double notched taper pin	9 1641 0020	
15	1	Valve pin	9 1637 0280	
16	1	Pressure spring	9 1803 0250	
17	1	Nipple, assy.	9 2205 1330	
18	1	Cup spring	9 1801 0330	
19	1	Washer	2 2404 1160	
20	2	Sound absorber	1 2034 6100	
21	3	Socket head screw	9 1110 4020	
22	1	Socket head screw	9 1112 5120	
30	1	Gasket	9 1903 0260	
31	1	Gasket	9 1903 1240	
32	1	Plastic ball	9 1018 0060	
33	1	O-ring	9 1901 3230	
34	1	O-ring	9 1901 2610	
35	1	Shaft seal	9 1905 0250	
36	3	Gasket	9 1903 1250	
38	5	Vane	3 8601 1050	
40	1	End plate	2 2404 1110	
41	1	Grooved ball bear.	9 1001 0030	
42	1	Spacer ring	1 1101 1090	
43	1	Cylinder bushing	3 8636 1020	
44	1	Cylinder pin	9 1619 0700	
45	1	Rotor	2 2404 1030	

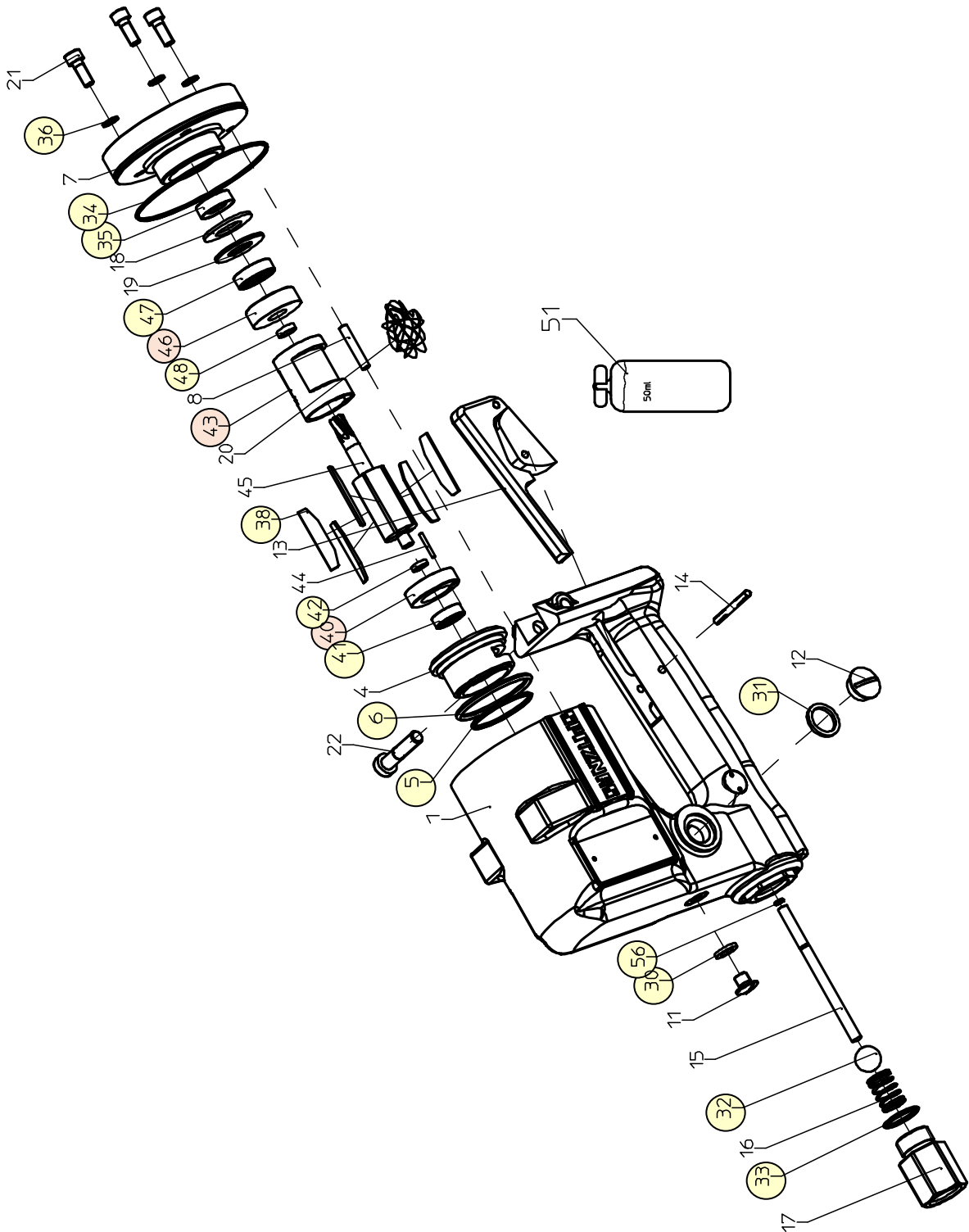
Spare Parts List

Description:

Motor with handle

Part and drawing number:

2 2404 6500



Spare Parts List					
Description:				Part and drawing number:	
Output unit, assy.				2 2426 7000	
Item	Qty.	Description	Part and Drawing no.		Remarks
401	1	Gearbox housing	2 2404 4010		
402	1	Tension sleeve	2 2404 8100		
403	1	Sliding sleeve	2 2404 7130		
404	1	Bushing	2 2404 7140		
405	1	Feather key	9 1506 9240		
406	1	O-ring	9 1901 5940		
407	1	Shifter sleeve, assy.	2 2404 8940		with item 406
408	1	Cylinder, assy.	2 2404 8920		
409	1	Impact piston	2 2404 4540		
410	1	Nut	2 2404 8240		
411	1	End piece	2 2404 7010		
412	1	Bevel gears	2 2404 4400		
413	1	Piston	2 2404 4520		
414	1	Piston pin, assy.	2 2404 4960		
415	1	Cover	2 2404 4090		
416	1	Crankshaft	2 2404 4550		
417	2	Roller	2 2404 4570		
418	1	Gear pinion	2 2404 4040		
419	1	Bushing	2 2404 8080		
420	1	Output shaft	2 2404 8090		
421	1	Sealing	2 2404 4190		
422	1	Output unit housing	2 2404 8010		
423	1	Connecting rod	2 2426 4530		
424	1	Shaft seal	9 1905 0540		
425	1	Slip clutch, assy.	2 2404 4920		
426	1	O-ring	9 1901 3500		
427	2	O-ring	9 1901 3290		
428	1	O-ring	9 1921 2140		
429	1	Pressure spring	9 1803 4190		
430	1	Feather key	9 1501 1140		
431	4	Roller	2 2404 4580		
432	1	O-ring	9 1901 5940		

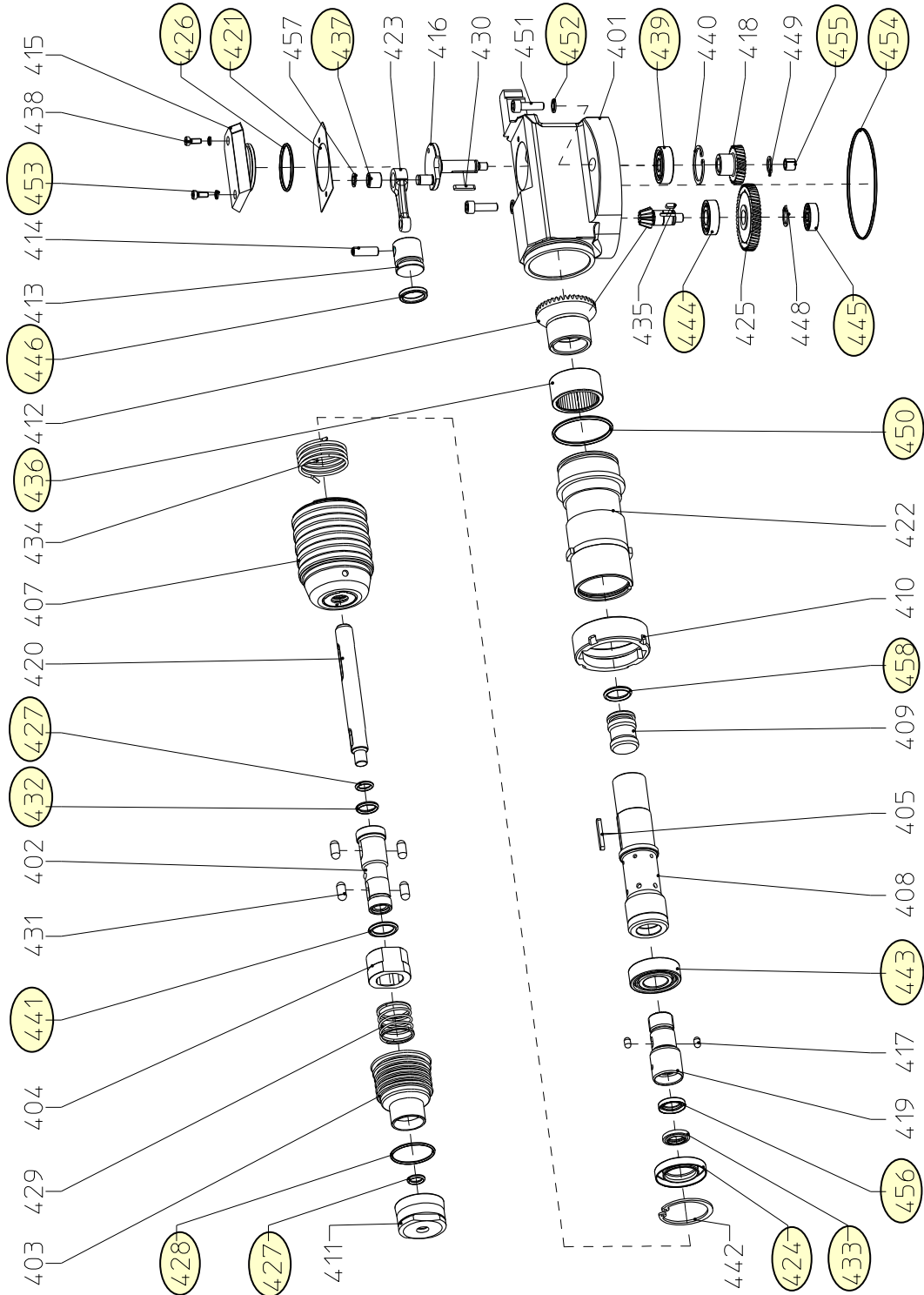
Spare Parts List

Description:

Output unit, assy.

Part and drawing number:

2 2426 7000



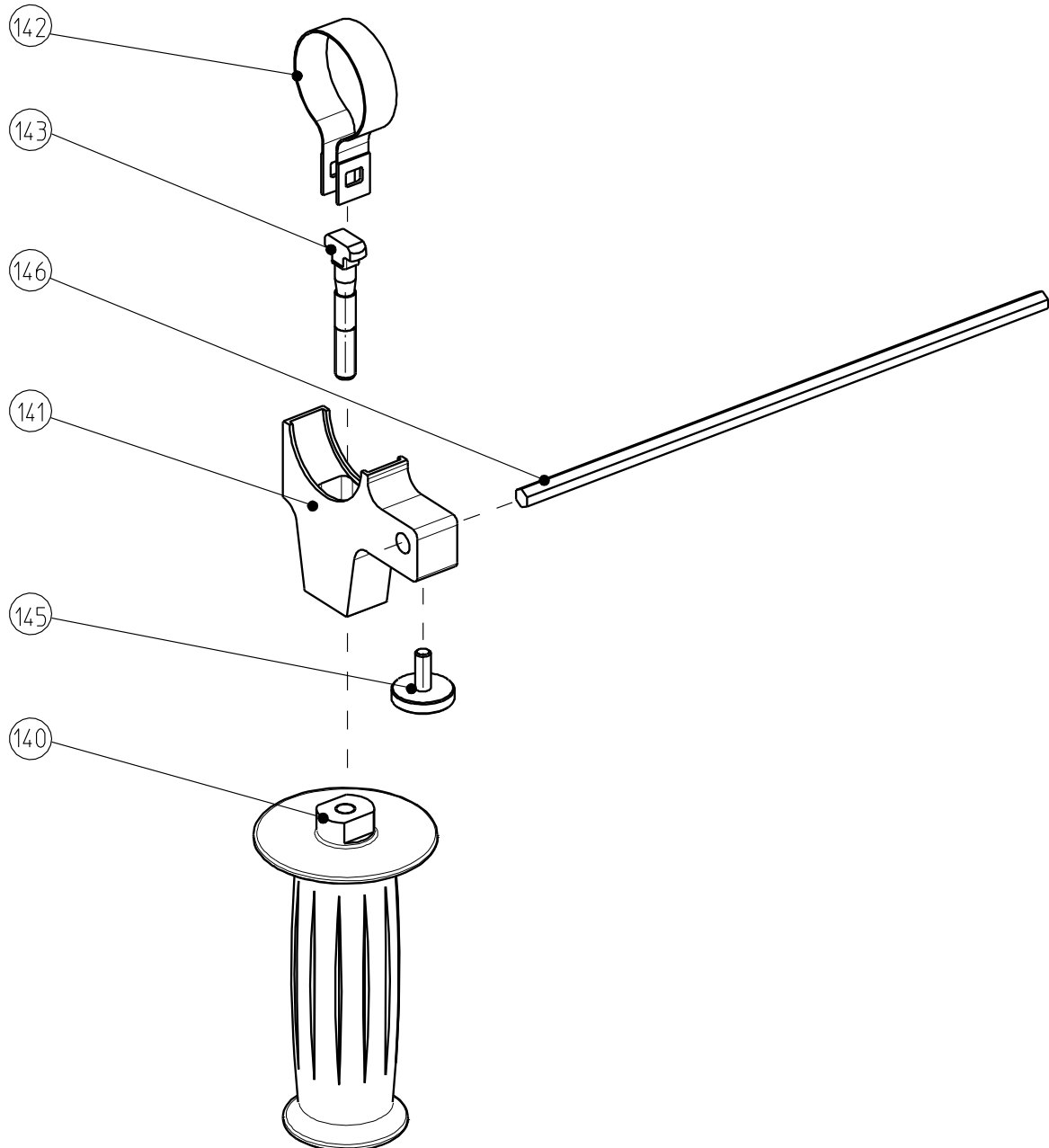
Spare Parts List

Description:

Second handle, assy.

Part and drawing number:

2 2406 6900



Spare Parts List

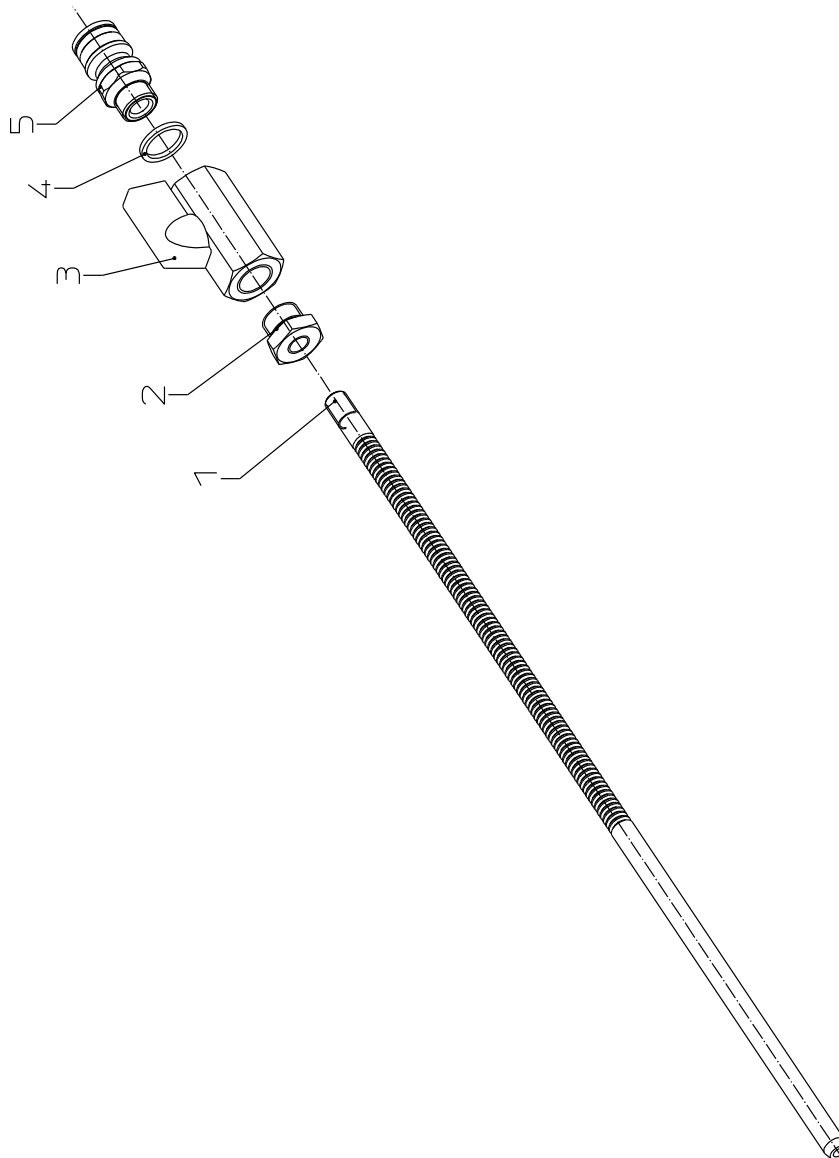
Description:

Cooling pipe, assy.

Part and drawing number:

2 2404 9200

Item	Qty.	Description	Part and Drawing no.	Remarks
1	1	Flushing pipe	2 2404 9210	
2	1	Reducing nipple	9 2203 0310	
3	1	Ball valve hexagonal	9 2014 0900	
4	1	Gasket	9 2126 0100	
5	1	Connection	9 2050 0150	



Spare Parts List

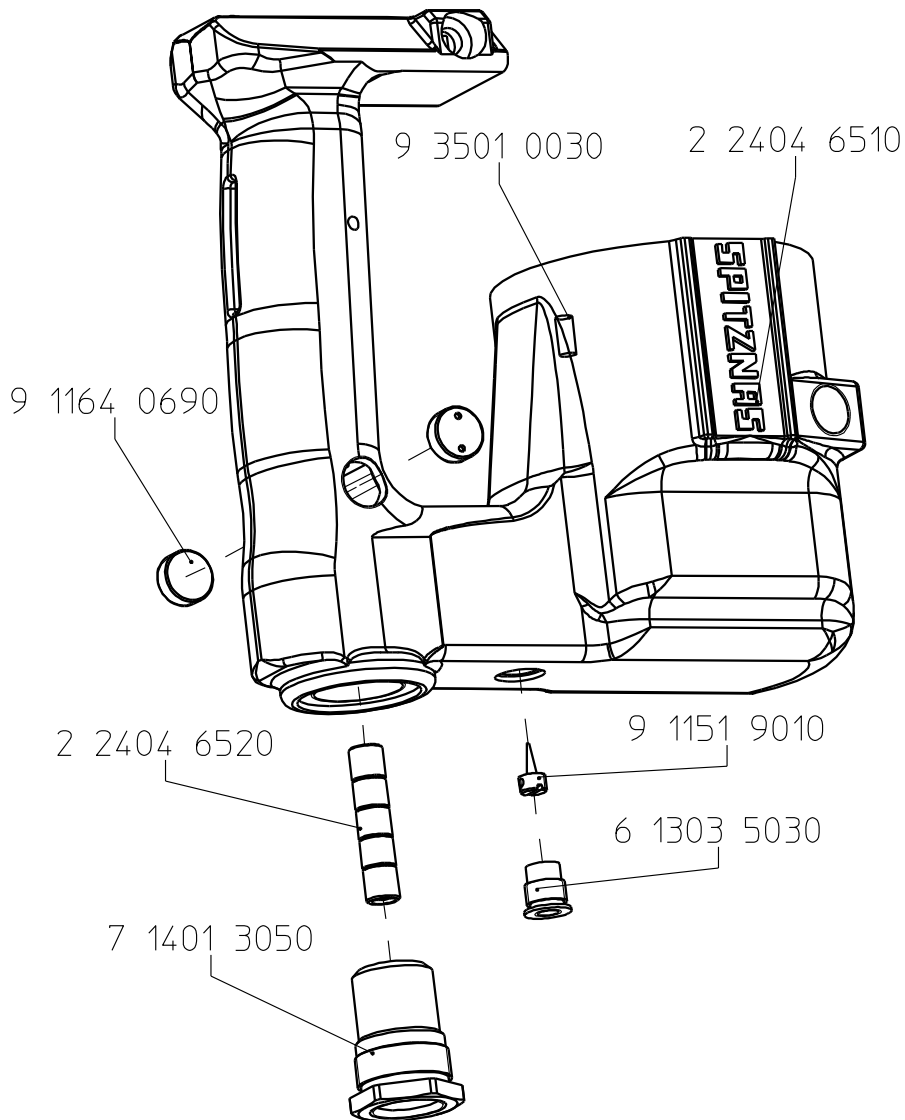
Description:

Motor housing

Part and drawing number:

2 2404 6920

Item	Qty.	Description	Part and Drawing no.	Remarks
	1	Motor housiung with handle	2 2404 6510	
	3	Helicoil	9 3501 0030	
	1	Valve insert	7 1401 3050	
	1	Threaded bushing	6 1303 5030	
	1	Adjusting screw	9 1151 9010	
	2	Locking screw	9 1164 0690	
	1	Bushing	2 2404 6520	





**CS Unitec, Inc. | www.csunitec.com
22 Harbor Ave, Norwalk, CT 06850, USA
4330 Center St, Deer Park, TX 77536, USA
P: 203-853-9522
TF: 800-700-5919
F: 203-853-9522
E: info@csunitec.com**

1-800-700-5919 (US/CA)

www.csunitec.com
info@csunitec.com

+1-203-853-9522 (Intl.)