

Pneumatic Rotary Hammer Drill

Type 2 2404 0030

Techn. Doc. No. 252



Illustration can differ from the original

Repair Manual and Spare Parts List

Repair

Disassembly

Disassembly and re-assembly should be done according to the sectional drawing only. Observe the safety instructions of the operation and maintenance manual.

The vanes should be changed in good time. They are considered worn if their width is less than 7 mm, see Fig. 6.

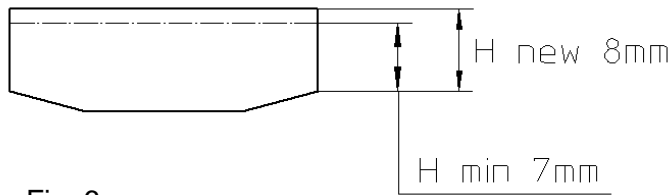


Fig. 6

Loosen screws item 21, pull out centring cover item 7 and inner motor parts. Pull end plates Items 40+48 with bearings items 41+47 and spacers Items 42+48 off the rotor item 45. Take off cylinder bushing item 43 and remove vanes item 38 from the rotor slots. Replace vanes when necessary.

Reassembly

Remove any oil and resin residue from the rotor slots before reassembly. The new vanes item 38 should fit easily into the slots. Basically, re-assembly is done in reverse order.

Caution!

If the bearings items 41+47 have been replaced, ensure correct spacing. If necessary, use new spacers items 42+ 48 and adjust the clearance Fig 7. The spacer should be fitted 0.04 – 0.05 mm in front of the end plate. To get the right clearance, it is necessary to press the inner bearing ring backlash-free towards the bushing item 4 respectively washer item 19. The chamfered edges of the spacers items 42 and 48 should point towards the plane surface of the rotor.

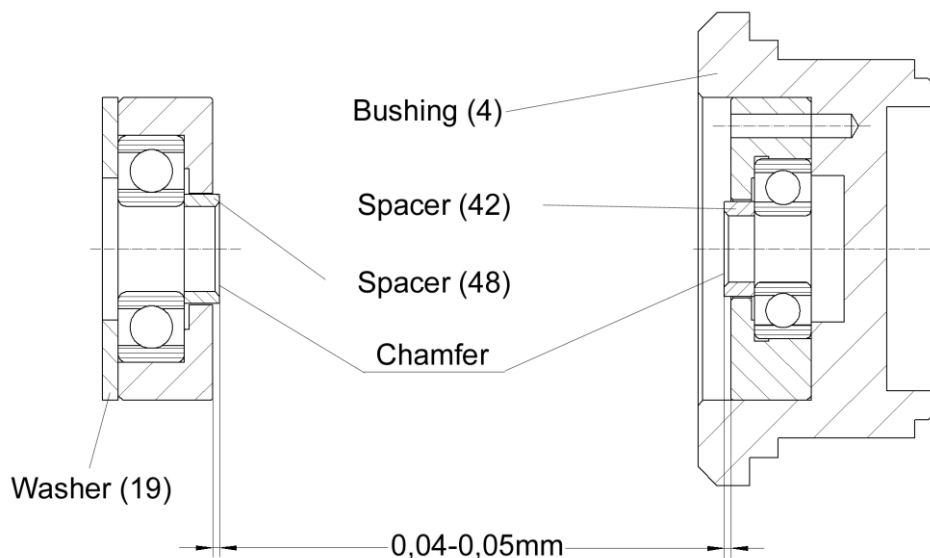


Fig. 7

Re-assembly

Before starting the re-assembly check all parts for wear and damage and replace them if necessary. Generally replace wear parts always (O-rings, radial shaft sealings and bearings).

Grease the items 412, 417, 418, 419, 424, 425, 431, 433, 436, 437, 439, 443, 444, 445, 455 und 456 with grease 20g Spitznas part number 9 9902 0250 and oil the items 405, 408, 409, 413, 446 und 458 with oil SAE 5W to 10W.

Use the mounting device Spitznas part number 2 2404 9810 for the assembly of the slipping clutch, assy. item 425. Use the testing device Spitznas number 2 2404 9840 for testing.

Fill the drive unit with 50 ml of oil Spitznas part number 9 9902 0020 before mounting the cover item 415.

Spare Parts

Only genuine Spitznas spare parts may be used. There is no warranty for damages and liability is disclaimed, if non-original spare parts and accessories are used.

Spare Parts List

Description:

Motor with Handle

Part and drawing number:

2 2404 6500

Item	Qty.	Description	Part and Drawing no.		Remarks
1	1	Motor housing with handle	2 2404 6920		see extra list
4	1	Bushing	2 2404 1120		
5	1	O-ring	9 1901 3120	*	
6	1	O-ring	9 1901 4190	*	
7	1	Centring cover	2 2404 1940		
8	1	Cylinder pin	9 1619 1350		
11	1	Locking screw	9 1150 9020		
12	1	Locking screw	9 1150 9140		
13	1	Valve lever	2 2404 6800		
14	1	Double notched taper pin	9 1641 0020		
15	1	Valve pin	9 1637 2560		
16	1	Pressure spring	9 1803 0250		
17	1	Nipple	9 2205 1330		
18	1	Cup spring	9 1801 0330		
19	1	Washer	2 2404 1160		
20	2	Sound absorber	1 2034 6100		
21	3	Socket head screw	9 1110 4020		
22	1	Socket head screw	9 1112 5120		
30	1	Gasket	9 1903 0260	*	
31	1	Gasket	9 1903 1240	*	
32	1	Plastic ball	9 1018 0060	*	
33	1	O-ring	9 1901 3230	*	
34	1	O-ring	9 1901 2610	*	
35	1	Shaft seal	9 1905 0250	*	
36	3	Gasket	9 1903 1250	*	
38	5	Vane	3 8601 1050	*	
40	1	End plate	2 2404 1110	*	
41	1	Grooved ball bearing	9 1001 0030	*	
42	1	Spacer ring	1 1101 1090	*	
43	1	Cylinder bushing	3 8636 1020	*	
44	1	Cylinder pin	9 1619 0700		
45	1	Rotor	2 2404 1030	*	

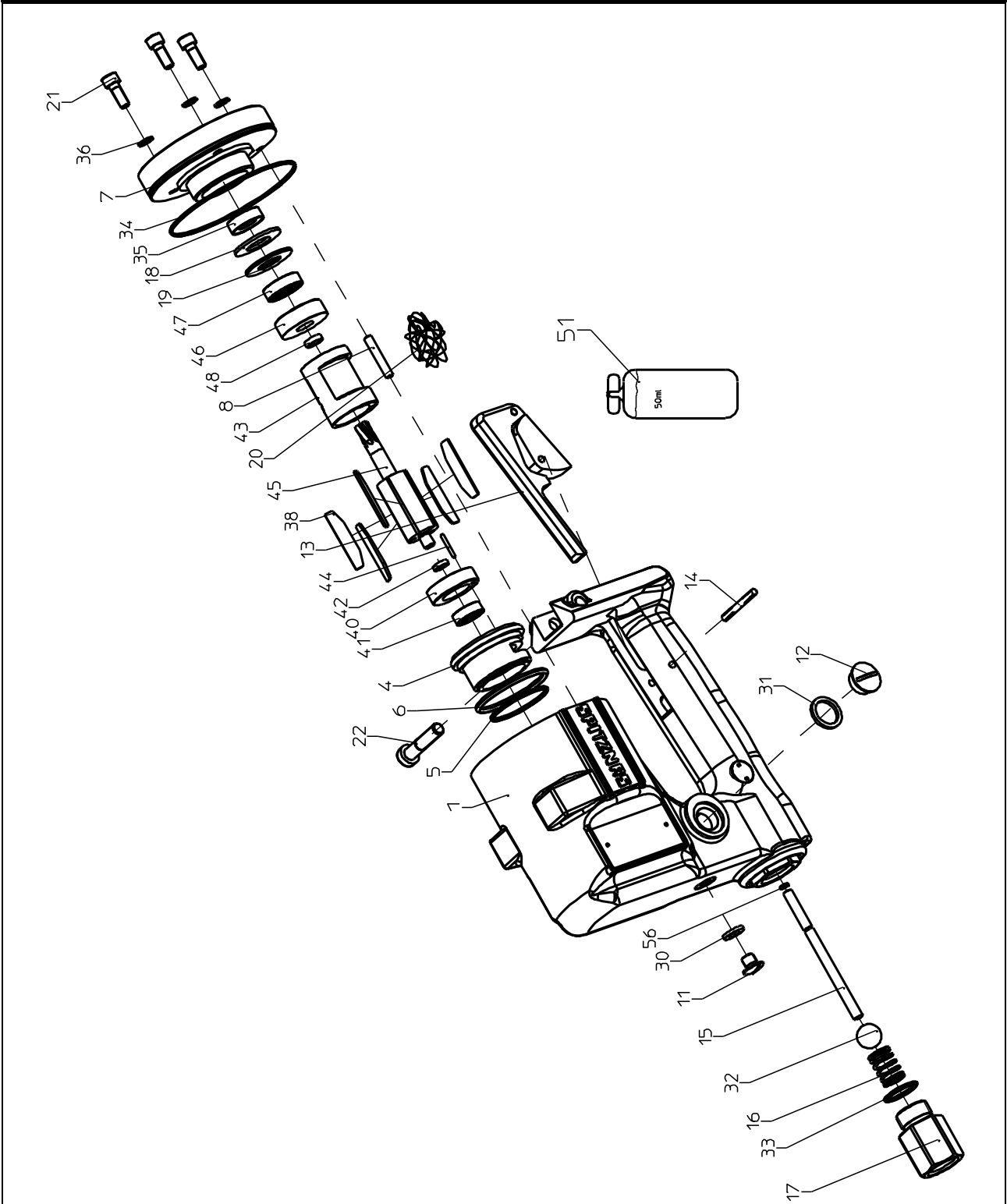
Spare Parts List

Description:

Motor with handle

Part and drawing number:

2 2404 6500



Spare Parts List

Description: Output unit, assy.	Part and drawing number: 2 2426 7000
---	--

Item	Qty.	Description	Part and Drawing no.		Remarks
401	1	Gearbox housing	2 2404 4010		
402	1	Tension sleeve	2 2404 8100		
403	1	Sliding sleeve	2 2404 7130		
404	1	Bushing	2 2404 7140		
405	1	Feather key	9 1506 9240		
407	1	Shifter sleeve, assy.	2 2404 8940		
408	1	Cylinder, assy.	2 2404 8920		
409	1	Impact piston	2 2404 4540		
410	1	Nut	2 2404 8240		
411	1	End piece	2 2404 7010		
412	1	Bevel gears	2 2404 4400		
413	1	Piston	2 2404 4520		
414	1	Piston pin, assy.	2 2404 4960		
415	1	Cover	2 2404 4090		
416	1	Crankshaft	2 2404 4550		
417	2	Roller	2 2404 4570		
418	1	Gear pinion	2 2404 4040		
419	1	Bushing	2 2404 8080		
420	1	Output shaft	2 2404 8090		
421	1	Sealing	2 2404 4190		
422	1	Output unit housing	2 2404 8010		
423	1	Connecting rod	2 2426 4530		
424	1	Shaft seal	9 1905 0540	*	
425	1	Slip clutch, assy.	2 2404 4920		
426	1	O-ring	9 1901 3500	*	
427	2	O-ring	9 1901 3290	*	
428	1	O-ring	9 1921 2140	*	
429	1	Pressure spring	9 1803 4190		
430	1	Feather key	9 1501 1140		
431	4	Roller	2 2404 4580		
432	1	O-ring	9 1901 5940	*	

Spare Parts List					
Description:				Part and drawing number:	
Output unit, assy.				2 2426 7000	
Item	Qty.	Description	Part and Drawing no.		Remarks
433	1	Scraper	9 1908 1780		
434	1	Pressure spring	9 1807 0210		
435	1	Feather key	9 1501 1040		
436	1	Needle sleeve	9 1014 0450	*	
437	1	Needle sleeve	9 1014 0010	*	
438	2	Socket head screw	9 1112 2020		
439	1	Grooved ball bearing	9 1004 0010	*	
440	1	Snap ring	9 1703 0080		
441	1	O-ring	9 1901 3270	*	
442	1	Snap ring	9 1703 0130		
443	1	Grooved ball bearing	9 1003 0050	*	
444	1	Grooved ball bearing	9 1003 0020	*	
445	1	Grooved ball bearing	9 1001 0070	*	
446	1	Sealing quad ring	9 1913 0730	*	
448	1	Snap ring	9 1702 0050		
449	1	Snap ring	9 1702 0040		
450	1	O-ring	9 1901 5970	*	
451	2	Socket head-screw	9 1110 4030		
452	2	Sealing U-shape	9 1908 1930		
453	2	Sealing U-shape	9 1908 1950	*	
454	1	O-ring	9 1901 2610	*	
455	1	Sliding bearing	9 1029 0130	*	
456	1	Shaft sealing ring	9 1905 1580	*	
457	1	Snap ring	9 1702 0020		
458	1	O-ring	9 1901 4070	*	
	1	Pneumatic oil	9 9902 0020		
	20	Grease Lithium saponified	9 9902 0110		
		* Wear parts to be stored in case of			
		continuous use!			

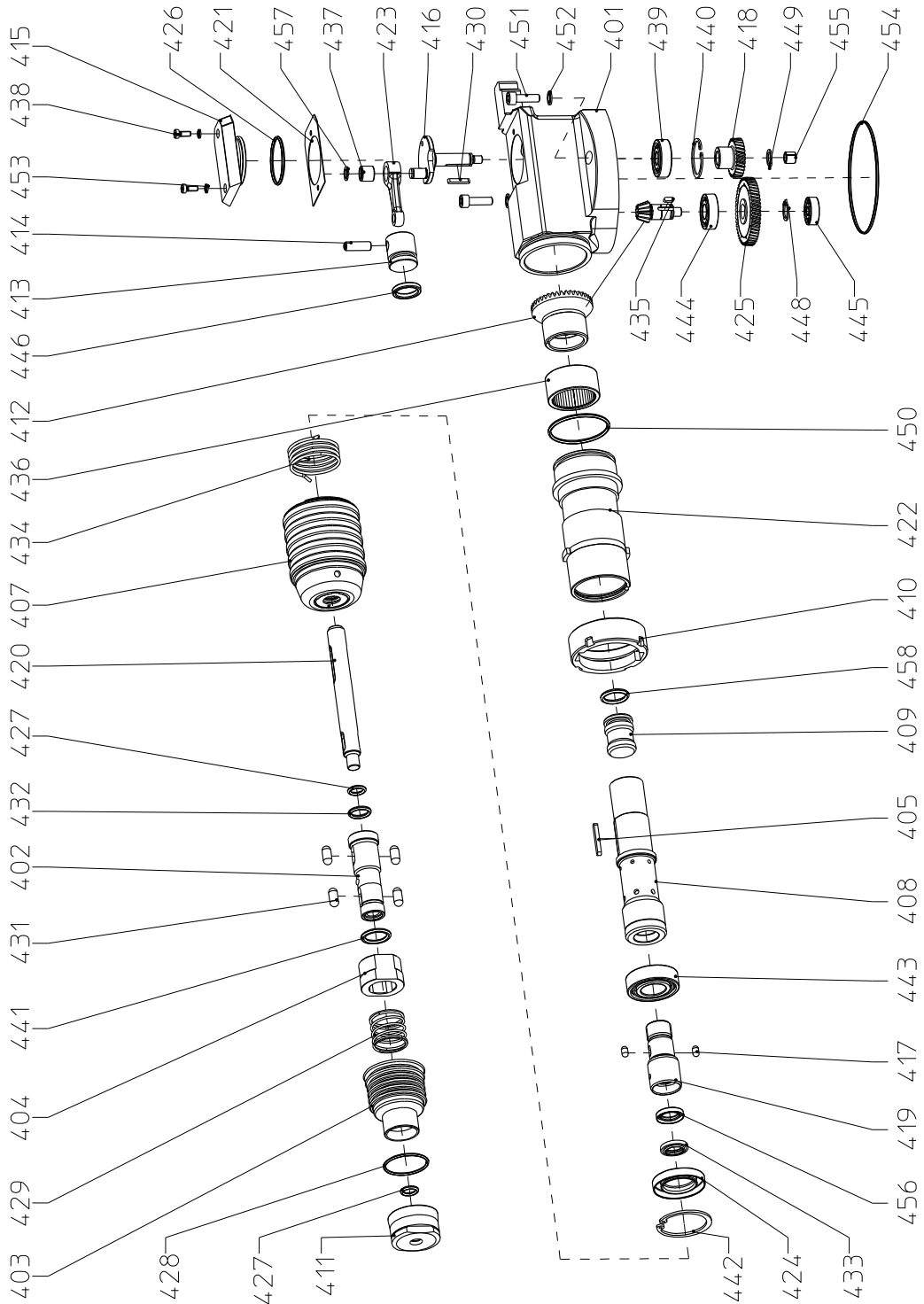
Spare Parts List

Description:

Output unit, assy.

Part and drawing number:

2 2426 7000



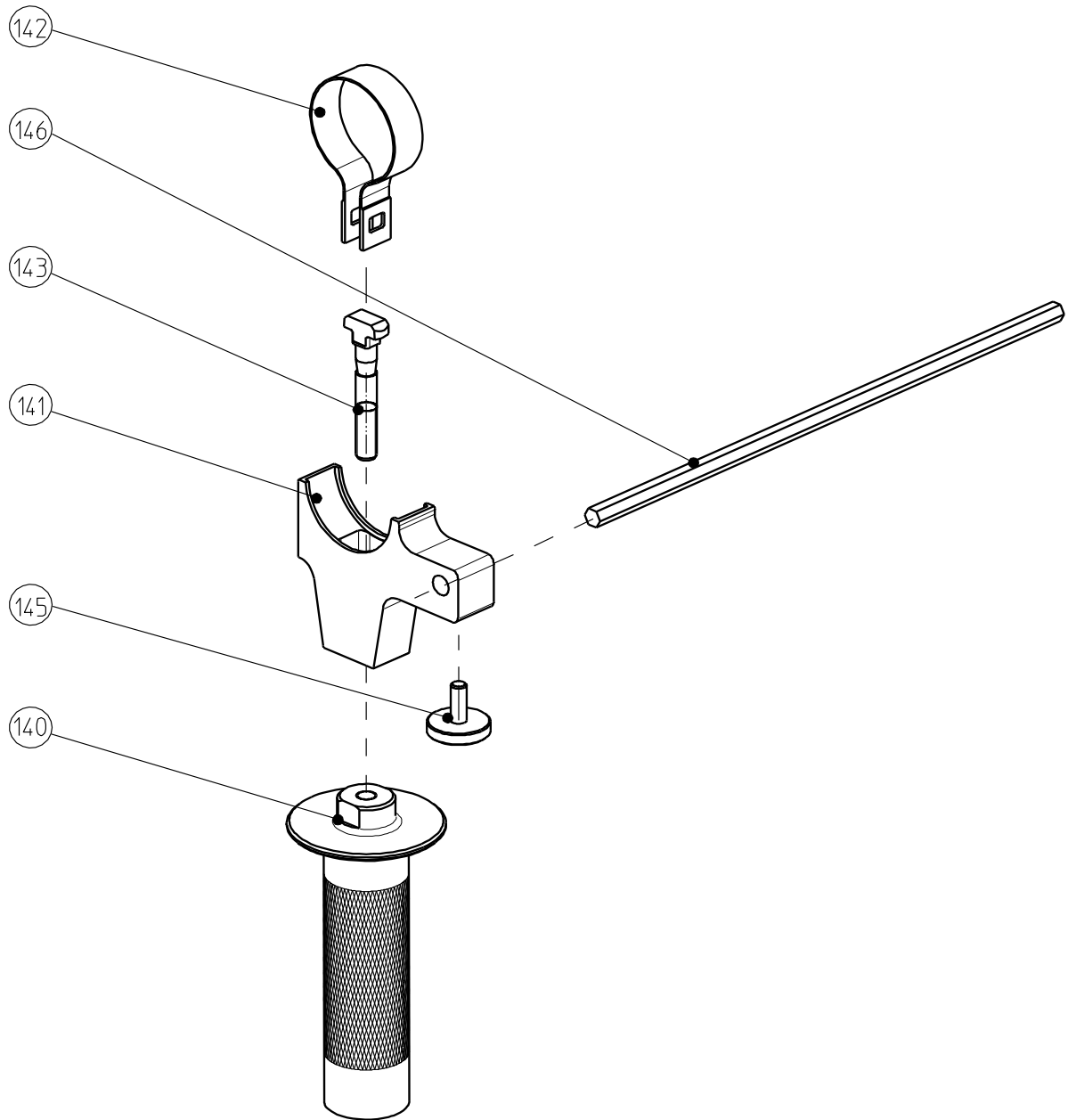
Spare Parts List

Description:

Second handle, assy.

Part and drawing number:

2 2408 6900



Spare Parts List

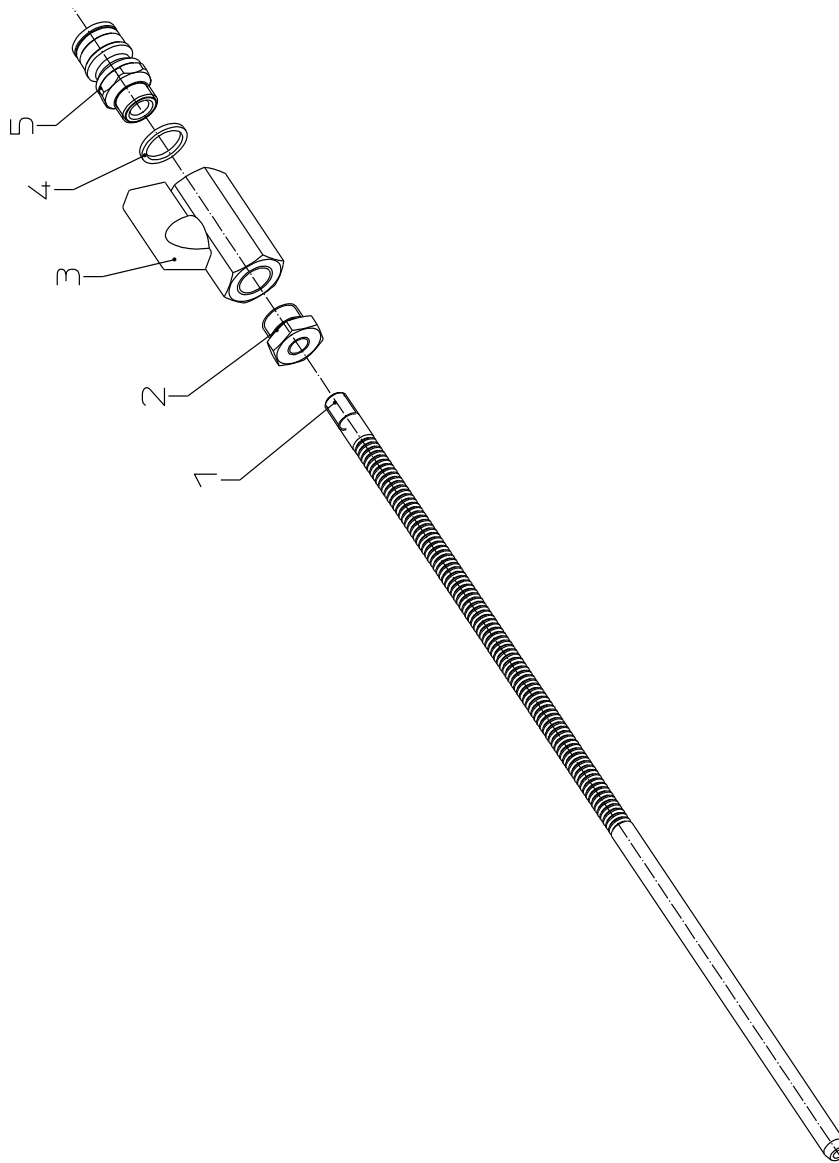
Description:

Cooling pipe, assy.

Part and drawing number:

2 2404 9200

Item	Qty.	Description	Part and Drawing no.	Remarks
1	1	Flushing pipe	2 2404 9210	
2	1	Reducing nipple	9 2203 0310	
3	1	Ball valve hexagonal	9 2014 0900	
4	1	Gasket	9 2126 0100	
5	1	Connection	9 2050 0150	



Spare Parts List

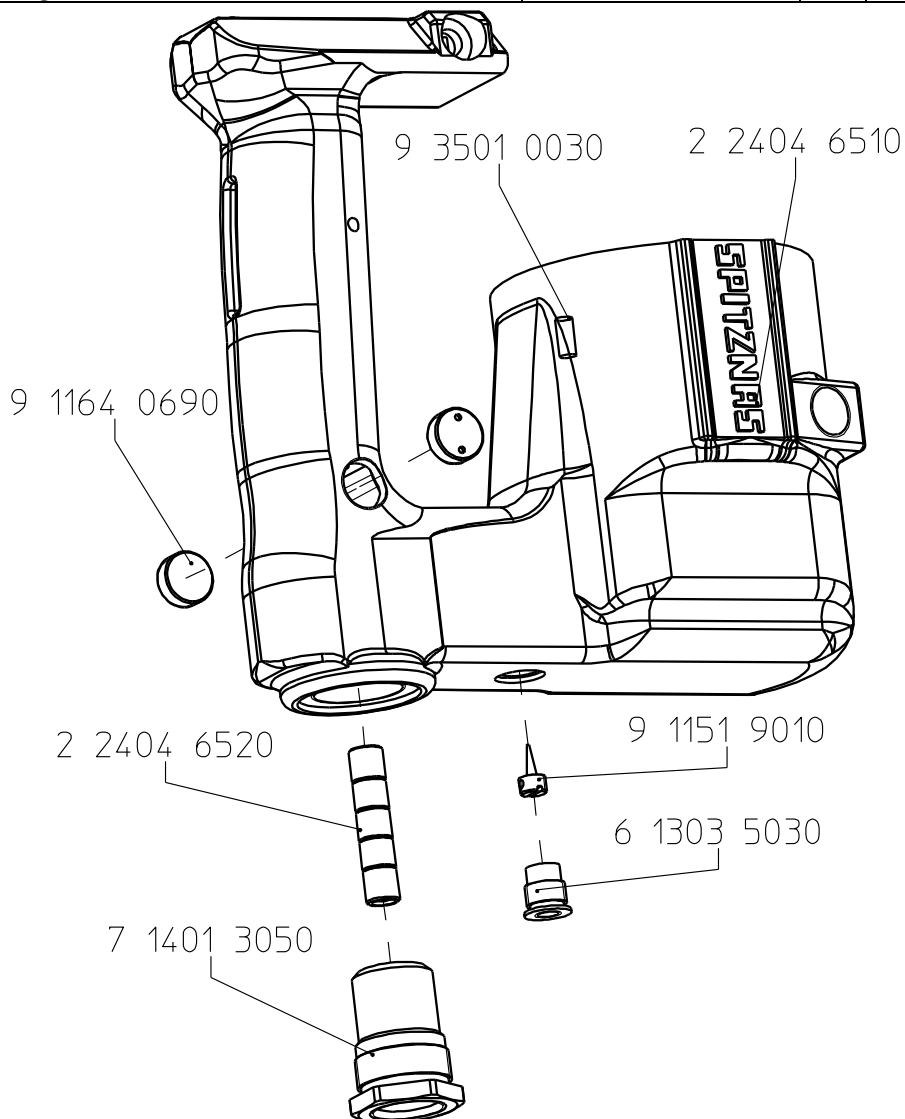
Description:

Motor housing

Part and drawing number:

2 2404 6920

Item	Qty.	Description	Part and Drawing no.	Remarks
	1	Motor housiung with handle	2 2404 6510	
	3	Helicoil	9 3501 0030	
	1	Valve insert	7 1401 3050	
	1	Threaded bushing	6 1303 5030	
	1	Adjusting screw	9 1151 9010	
	2	Locking screw	9 1164 0690	
	1	Bushing	2 2404 6520	





CS Unitec, Inc.
22 Harbor Ave, Norwalk, CT 06850
USA

Toll-free: 1-800-700-5919
(USA & Canada)
Phone: 203-853-9522
(outside USA & Canada)
Fax: 203-853-9921
E-Mail: info@csunitec.com
Internet: www.csunitec.com