



ATEX Classified Power Tools Ensure a High Level of Safety in Explosive Atmospheres

ATEX Directive 2014/34/EU defines requirements for controlling explosive atmospheres, as well as the standards for the equipment used in them. An explosive atmosphere is an atmosphere where enough flammable gas, mist, vapor or dust is mixed with air to cause an explosion if ignition occurs.

What is ATEX?


ATEX (ATmospheres EXplosibles) is a directive for those who design, manufacture or sell any equipment intended for use in potentially explosive atmospheres. Technical and quality objectives must be certified by a third-party certification association. The ATEX directive has been a legal requirement for all European Union States since July 2003. The ATEX symbol is recognized internationally, providing assurance to users around the world that the product was manufactured to high levels of safety.

What types of tools receive ATEX certification?

Pneumatic, hydraulic and electric power tools for construction and industry can be ATEX certified. CS Unitec offers a comprehensive line of power tools for the oil, gas and energy industries. ATEX certified power tools from our line include select models of reciprocating saws, hacksaws, rotary hammer drills, impact wrenches, portable band saws, nut runners, magnetic drills, axial fans and more.

How can I tell if my tool is ATEX certified?

The tool will be marked with the appropriate ATEX classification label and Ex symbol .

ATEX 	II	2G	Ex	h	IIC	T6	Gb
Marking according to the directive 2014/34/EU	Equipment Group	Category	Norm	Non-electrical equipment	Explosion Group	Temperature Class	Equipment Protection Level
Equipment Group I (mining)			Equipment Group II (surface industry)				
Category M1	Category M2	Category 1G	Category 2G	Category 3G			
very high safety level, in the event of two independent incidents	high safety level	safe, also in the event of rare incidents	safe, also in the event of rare incidents	safe in normal operation			
Equipment Protection Level							
Ma	Mb	Ga	Gb	Gc			
Permissible Ex Zone (0=constantly, 1=sometimes, 2=infrequently)							
		0	1	2	1	2	2
Gases and Vapors							
Explosion Groups				Temperature Classes			
IIA	IIB	IIC	Ignition Temperature	Temperature Class	Max. Permissible Surface Temp.	Permissible Equipment Group	
Acetone, Ammonia Benzol - pure, Acetic acid, Ethane, Ethyl acetate, Ethyl chloride, Carbon monoxide, Methane, Methanol, Methylene chloride, Naphthalene, Phenol, Propane, Toluol	illuminating gas Composition: e.g. Hydrogen (51%) Methane (21%) Nitrogen (15%) Carbon monoxide (9%)	Hydrogen	>450°C	T1	450°C	T1 to T6	
Ethyl alcohol, i-Amyl acetate, n-Butane, n-Butyl alcohol, Cyclohexane, Acetic anhydride	Ethylene, Ethylene oxide	Ethine (Acetylene)	> 300°C to < 450°C	T2	300°C	T2 to T6	
Petrol - general, diesel fuel, jet fuel, heating oil DIN 51603, n-Hexane	Ethylene glycol, Hydrogen sulphide		> 200°C to < 300°C	T3	200°C	T3 to T6	
Acetaldehyde	Ethyl ether		> 135°C to < 200°C	T4	135°C	T4 to T6	
			> 100°C to < 135°C	T5	100°C	T5 to T6	
		Sulphide of carbon	> 85°C to < 100°C	T6	85°C	T6 only	
Permissible Equipment Groups				Example: Tool with II 2G Ex h IIB T4 Gb can be used in all Zone 1 and 2 areas with IIA and IIB - T1/T2/T3/T4. Tool with II 2G Ex h IIC T6 Gb can be used in all Zone 1 and 2 areas (IIC T6 is the highest classification). <i>Subject to change</i>			
IIA	IIB	IIC	IIB	IIC	Only IIC		

CAUTION: The user is responsible for following all safety regulations (OSHA, etc.) when choosing the appropriate tool for the hazards present.

**ATEX Classified Power Tools for Ex and Hot Work Zones – Air & Hydraulic****Axial Fans: Pneumatic and Electric**

Model No.	Power Type	Description	ATEX Classification
8 1020 0870	Electric	Axial Fan, 12" Dia., 230 Volt, 50 Hz, Single Phase	II2GExhIIBT3Gb
8 1531 0300	Pneumatic	Axial Fan, 12" Dia.	II2GExhIIBT6Gb
8 1533 0300	Pneumatic	Axial Fan, 20" Dia.	II2GExhIIBT6Gb
8 1534 0300	Pneumatic	Axial Fan, 24" Dia.	II2GExhIIBT6Gb
8 1611 0300	Pneumatic	Axial Fan, 12" Dia.	II2GExhIIBT6Gb
8 1616 0010	Pneumatic	Axial Fan, 5" Dia.	II2GExhIIBT6Gb
8 1620 0010	Pneumatic	Air Mover, 7"	II2GExhIIBT6Gb

**Band Saws: Pneumatic and Hydraulic**

Model No.	Power Type	Description	ATEX Classification
5 6030 0010	Pneumatic	Band Saw, 4" x 4" Cutting, Stainless Steel Frame	IM2ExhIMbT6
5 6032 0010	Pneumatic	Band Saw, 4" x 7" Cutting, Stainless Steel Frame	IM2ExhIMbT6
5 6041 0010	Hydraulic	Band Saw, 7" x 7" Cutting	II2GExhIIBT6Gb
5 6043 0010	Hydraulic	Band Saw, 4-3/4" Cutting	II2GExhIIBT6Gb
5 6054 0010	Hydraulic	Band Saw, 9" W x 8" D Cutting	II2GExhIIBT6Gb
5 6062 0010	Pneumatic	Band Saw, 9" W x 8" D Cutting	IM2ExhIMbT6
5 6093 0010	Pneumatic	Band Saw, 4-3/4" Cutting with table	II2GExhIIBT6Gb
5 6093 0100	Pneumatic	Band Saw, 4-3/4" Cutting	II2GExhIIBT6Gb

**Chain Saws: Pneumatic**

Model No.	Power Type	Description	ATEX Classification
5 1026 0010	Pneumatic	Chain Saw, Aluminum Housing with Brake	II2GExhIIBT5Gb
5 1027 0010	Pneumatic	Chain Saw, For Plastic with Brake	II2GExhIIBT5Gb
5 1028 0010	Pneumatic	Underwater Chain Saw, with Brake	II2GExhIIBT5Gb
5 1029 0010	Pneumatic	Chain Saw, with Chain Brake	IM2ExhIMbT5

**Core Drills: Pneumatic and Hydraulic**

Model No.	Power Type	Description	ATEX Classification
2 1317 0030	Hydraulic	Core Drill, 3.6 HP	II2GExhIIBT5Gb
2 1327 0010	Hydraulic	Core Drill, 4.2 HP	II2GExhIIBT5Gb
2 1328 0050	Pneumatic	Core Drill, 3.8 HP	II2GExhIIBT6Gb
2 1333 0010	Pneumatic	Core Drill, 2.1 HP	II2GExhIIBT6Gb
2 1335 0010	Pneumatic	Core Drill, 3.8 HP	II2GExhIIBT6Gb
2 1336 0010	Pneumatic	Core Drill, 3.75 HP	IM2ExhIMbT6
2 1353 0010	Pneumatic	Core Drill, up to 82mm, 160mm w/rig	II2GExhIIBT6Gb
2 1355 0010	Pneumatic	Core Drill, up to 82mm, 160mm w/rig	II2GExhIIBT6Gb

CAUTION: The user is responsible for following all safety regulations (OSHA, etc.) when choosing the appropriate tool for the hazards present.

ATEX Classified Power Tools for Ex and Hot Work Zones - Air & Hydraulic



Corner Drills: Pneumatic			
Model No.	Power Type	Description	ATEX Classification
2 1701 0030	Pneumatic	Corner Drill, MT2, Roll Throttle	IM2ExhIMbT6
2 1801 0030	Pneumatic	Corner Drill, MT3, Roll Throttle	IM2ExhIMbT6



Drills & Drive Units: Pneumatic			
Model No.	Power Type	Description	ATEX Classification
2 1260 0010	Pneumatic	Drill, 3/8", Pistol Grip	IM2ExhIMb II2GExhIIBT6Gb
2 1261 0010	Pneumatic	Drill, 1/2", Pistol Grip	IM2ExhIMb II2GExhIIBT6Gb
2 1266 0010	Pneumatic	Drill, 1/2", Pistol Grip	II2GExhIIBT6Gb
2 1267 0010	Pneumatic	Drill, 3/8", Pistol Grip, for underwater use	II2GExhIIBT6Gb
2 1268 0010	Pneumatic	Drill, 13mm, Pistol Grip	II2GExhIIBT6Gb
2 1310 0010	Pneumatic	Drill, 1/2" Geared Chuck & Key, D-Handle	IM2ExhIMbT6
2 1310 0020	Pneumatic	Drill, 1/2", Quick Chuck, D-Handle	IM2ExhIMbT6
2 1311 0010	Pneumatic	Drill, MT1, D-Handle	IM2ExhIMbT6
2 1362 0010	Pneumatic	Pistol Drill, up to 13mm, reversible	II2GExhIIBT5Gb
2 2081 0010	Pneumatic	Drive Unit, 13/16" sq. dr.	II2GExhIIBT6Gb
2 2082 0010	Pneumatic	Drill, MT3 Lever Throttle, 1.7 HP, 20 RPM	II2GExhIIBT6Gb
2 2085 0010	Pneumatic	Drill, MT2 Lever Throttle, 1.7 HP	II2GExhIIBT6Gb
2 2087 0010	Pneumatic	Drive Unit, 7/8" sq. dr., reversible, lever throttle	II2GExhIIBT6Gb
2 2087 0030	Pneumatic	Drive Unit, 7/8" sq. dr., reversible, twist throttle	II2GExhIIBT6Gb
2 2088 0010	Pneumatic	Drive Unit, 7/8" sq. dr., reversible, lever throttle	II2GExhIIBT6Gb
2 2088 0030	Pneumatic	Drive Unit, 7/8" sq. dr., reversible, twist throttle	II2GExhIIBT6Gb
2 2089 0010	Pneumatic	Drill, MT3 Lever Throttle, 1-1/4" in steel, reversible, 250 RPM, 1.7 HP	II2GExhIIBT6Gb
2 2089 0030	Pneumatic	Drill, MT3 Twist Throttle, 1-1/4" in steel, reversible, 250 RPM, 1.7 HP	II2GExhIIBT6Gb
2 2502 0010	Pneumatic	Drill, MT4 Lever Throttle, 2" in steel	II2GExhIIBT6Gb
2 2502 0030	Pneumatic	Drill, MT4 Twist Throttle, 2" in steel	II2GExhIIBT6Gb
2 2506 0010	Pneumatic	Drill, MT3 Lever Throttle, 1-1/4" in steel	II2GExhIIBT6Gb
2 2506 0030	Pneumatic	Drill, MT3 Twist Throttle, 1-1/4" in steel	II2GExhIIBT6Gb
2 2804 0010	Pneumatic	Drive Unit, 1-1/8" female sq. dr.	II2GExhIIBT6Gb



Dry Cut Saws: Pneumatic and Hydraulic			
Model No.	Power Type	Description	ATEX Classification
5 1115 0020 N	Pneumatic	Circular Saw, 9" Dia.	II2GExhIIBT5Gb
5 1127 0010	Hydraulic	Circular Saw, 12-5/8" Dia.	II3GExhIIBT5Gc
5 1128 0010	Hydraulic	Circular Saw, 7-1/2" Dia.	II2GExhIIBT5Gb



Hacksaws: Pneumatic and Hydraulic			
Model No.	Power Type	Description	ATEX Classification
5 1212 0050A	Pneumatic	Hacksaw, Lever Throttle	II2GExhIIBT5Gb
5 1213 0010	Hydraulic	Hacksaw, Roll Throttle, ZAMAK	IM2ExhIMbT5
5 1213 9500	Accessory	Magnetic Clamping Device for Hacksaw	
5 1220 0050	Hydraulic	Hacksaw, Lever Throttle	II2GExhIIBT5Gb
5 1230 0050	Hydraulic	Hacksaw, Lever Throttle, for Nuclear/Underwater w/fully-sealed gearbox	II2GExhIIBT5Gb

CAUTION: The user is responsible for following all safety regulations (OSHA, etc.) when choosing the appropriate tool for the hazards present.



ATEX Classified Power Tools for Ex and Hot Work Zones – Air & Hydraulic



Impact Wrenches: Pneumatic and Hydraulic

Model No.	Power Type	Description	ATEX Classification
6 1034 0010	Pneumatic	Impact Wrench, 1/2", 450 ft-lbs Torque	II2GExhIIBT6Gb
6 1312 0010	Pneumatic	Impact Wrench, 3/4", 1327 ft-lbs Torque	IM2ExhIMbT6
6 1313 0010	Pneumatic	Impact Wrench, 3/4"	II2GExhIIBT6Gb
6 1316 0010	Pneumatic	Impact Wrench, 1", 995 ft-lbs Torque	IM2ExhIMbT6
6 1316 0020	Pneumatic	Impact Wrench, 3/4", 995 ft-lbs Torque	IM2ExhIMbT6
6 1316 0040	Pneumatic	Impact Wrench, 1", 995 ft-lbs Torque	II2GExhIIBT6Gb
6 1316 0050	Pneumatic	Impact Wrench, 3/4", 995 ft-lbs Torque	II2GExhIIBT6Gb
6 1316 0060	Pneumatic	Impact Wrench, 1", 995 ft-lbs Torque, underwater use	II2GExhIIBT6Gb
6 1316 0070	Pneumatic	Impact Wrench, 3/4", 995 ft-lbs Torque, underwater use	II2GExhIIBT6Gb
6 1410 0010	Pneumatic	Impact Wrench, 1", 1620 ft-lbs Torque	II2GExhIIBT6Gb
6 1411 0010	Pneumatic	Impact Wrench, 1", 1620 ft-lbs Torque	IM2ExhIMbT6
6 1412 0010	Pneumatic	Impact Wrench, 1", 1364 ft-lbs Torque	IM2ExhIMbT6
6 1417 0040	Pneumatic	Impact Wrench, 1-1/2", 3240 ft-lbs Torque	II2GExhIIBT6Gb
6 1430 0010	Pneumatic	Impact Wrench, 1", 1900 ft-lbs Torque	IM2ExhIMbT6
6 1514 0010	Hydraulic	Impact Wrench, 1", 1220 ft-lbs Torque	II2GExhIIBT5Gb
6 1515 0010	Hydraulic	Impact Wrench, 3/4", 1220 ft-lbs Torque	II2GExhIIBT5Gb
6 1517 0010	Hydraulic	Impact Wrench, 1"	IM2ExhIMbT5
6 1520 0010	Hydraulic	Impact Wrench, 1", 1840 ft-lbs Torque	II2GExhIIBT5Gb



Magnetic Drills: Pneumatic and Hydraulic

Model No.	Power Type	Description	ATEX Classification
AB-4300-2	Pneumatic	Mag Drill, 2-1/16" dia.	II2GExhIIBT6Gb
AB-4300-2R	Pneumatic	Mag Drill, 2-1/16" dia., with extra rack for longer stroke	II2GExhIIBT6Gb
2 1345 0010	Hydraulic	Mag Drill, 4" dia., 1-1/4" dia. tapping	II2GExhIIT5Gb
2 1345 0020	Hydraulic	Mag Drill, 4" dia. with wide base, 1-1/4" dia. tapping	II2GExhIIT5Gb



Mixers: Pneumatic

Model No.	Power Type	Description	ATEX Classification
7 1114 0010	Pneumatic	Mixer, Roll Throttle, 0-440 RPM, 1.5 HP	IM2ExhIMbT6
7 1114 0020	Pneumatic	Mixer, Lever Throttle, 0-440 RPM, 1.5 HP	IM2ExhIMbT6



Nut Runners: Pneumatic and Hydraulic

Model No.	Power Type	Description	ATEX Classification
3 6242 0010	Hydraulic	Hydraulic Nut Runner, 3/4" female sq. dr.	II2GExhIIBT4Gb
3 6243 0010	Hydraulic	Hydraulic Nut Runner, 20mm male sq. dr.	II2GExhIIBT4Gb
6 1014 0010	Pneumatic	Nut Runner, 1/2" Sq. Drive, 180 RPM	IM2ExhIMbT6
6 1014 0050	Pneumatic	Nut Runner, 3/4" female Sq. Drive, 100 RPM	IM2ExhIMbT6
6 1055 0010	Pneumatic	Nut Runner, 3/4" Sq. Drive, 22 RPM	IM2ExhIMbT6
6 1056 0010	Pneumatic	Nut Runner, 3/4" Sq. Drive, 120 RPM	IM2ExhIMbT6
6 1057 0010	Pneumatic	Nut Runner, 3/4" Sq. Drive, 125 RPM	IM2ExhIMbT6
6 1061 0010	Pneumatic	Nut Runner, 7/8" Sq. Drive, 22 RPM	IM2ExhIMbT6

CAUTION: The user is responsible for following all safety regulations (OSHA, etc.) when choosing the appropriate tool for the hazards present.

ATEX Classified Power Tools for Ex and Hot Work Zones - Air & Hydraulic



Pipe Cutting Machines: Hydraulic & Pneumatic

Model No.	Power Type	Description	ATEX Classification
5 8002 7000	Pneumatic	Pipe Cutting Drive Unit, 2.4 HP	II2GExhIIBT6Gb
5 8006 7000	Hydraulic	Pipe Cutting Drive Unit, 4 HP	II2GExhIIBT6Gb
5 8010 0050	Pneumatic	Pipe Cutting Drive Unit, 4 HP	II2GExhIIBT6Gb



Reciprocating Saws: Hydraulic and Pneumatic

Model No.	Power Type	Description	ATEX Classification
5 1217 0020	Pneumatic	Reciprocating Saw, 1.3 HP	II2GExhIIBT5Gb
5 1219 0010	Hydraulic	Reciprocating Saw	II2GExhIIBT5Gb
CL50	Pneumatic	Reciprocating Saw, 1 HP	II2GExhIICT2Gb
CL75	Pneumatic	Reciprocating Saw, 1 HP	II2GExhIICT3Gb
JP901	Pneumatic	Reciprocating Saw, 1 HP	II2GExhIICT3Gb
PL905	Pneumatic	Reciprocating Saw, 1 HP	II2GExhIICT2Gb



Rotary Hammer Drills: Hydraulic and Pneumatic

Model No.	Power Type	Description	ATEX Classification
2 2404 0010	Pneumatic	1" dia., SDS Plus, 0-3000 Blows per Minute	II2GExhIIBT6Gb
2 2408 0010	Pneumatic	1" dia., SDS Plus, For Underground Mining	IM2ExhIMbT6
2 2417 0010	Pneumatic	2" dia., SDS Max	II2GExhIIBT6Gb
2 2418 0010	Hydraulic	2" dia., SDS Max	II2GExhIIBT5Gb
2 2426 0010	Hydraulic	1" dia., SDS Plus	II2GExhIIBT5Gb

Tools for Hydrogen Processing: Pneumatic

See p. 92-95

Model No.	Power Type	Description	ATEX Classification
2 1362 001C	Pneumatic	Drill, up to 1/2", reversible	II2GExhIICT5Gb
2 2404 001C	Pneumatic	1" dia., SDS Plus, 0-3000 Blows per Minute	II2GExhIICT6Gb
2 2080 001C	Pneumatic	Drill, 3/4" chuck with safety lever valve	II2GExhIICT6Gb
6 1034 001C	Pneumatic	Impact Wrench, 1/2" square drive, 3/4" (M20) max. bolt size	II2GExhIICT6Gb
6 1316 005C	Pneumatic	Impact Wrench, 1/2" square drive, 1-1/8" (M30) max. bolt size	II2GExhIICT6Gb
6 1316 004C	Pneumatic	Impact Wrench, 3/4" square drive, 1-1/8" (M30) max. bolt size	II2GExhIICT6Gb
6 1410 001C	Pneumatic	Impact Wrench, 1" square drive, 1-3/8" (M36) max. bolt size	II2GExhIICT6Gb
3 6212 005C	Pneumatic	Nut Runner, 3/4" female square drive, 35 RPM	II2GExhIICT6Gb
6 1014 005C	Pneumatic	Nut Runner, 3/4" female square drive, 100 RPM	II2GExhIICT6Gb
6 1055 001C	Pneumatic	Nut Runner, 3/4" female square drive, 22 RPM	II2GExhIICT6Gb
6 1056 001C	Pneumatic	Nut Runner, 3/4" female square drive, 67 RPM	II2GExhIICT6Gb
6 1057 001C	Pneumatic	Nut Runner, 3/4" female square drive, 125 RPM	II2GExhIICT6Gb
6 1061 001C	Pneumatic	Nut Runner, 7/8" female square drive, 22 RPM	II2GExhIICT6Gb

CAUTION: The user is responsible for following all safety regulations (OSHA, etc.) when choosing the appropriate tool for the hazards present.



ATEX Classified Power Tools for Ex and Hot Work Zones – Air & Hydraulic



Surface Preparation Tools: Pneumatic

Table with 4 columns: Model No., Power Type, Description, and ATEX Classification. Lists 17 pneumatic surface preparation tools including needle scalers and scaling hammers.

Tools for Hydrogen Processing: Pneumatic

See p. 92-95



Table with 4 columns: Model No., Power Type, Description, and ATEX Classification. Lists 12 pneumatic tools for hydrogen processing.

CAUTION: The user is responsible for following all safety regulations (OSHA, etc.) when choosing the appropriate tool for the hazards present.



ATEX-Certified Needle and Chisel Scalers

Specially-designed for use in hazardous environments – equipped with Vibro-Lo™ low vibration technology

These specially engineered Trelawny VL203Ex, VL223Ex and VL303Ex needle and chisel scalers are:

- Fully certified to the classification: Ex II 2 G Ex h IIC T4 Gb (GAS) and Ex II 2 D Ex h IIIC T135 °C Db (DUST) under the European Directive 94/9/EC
- Ideal for use in oil, gas & petrochemical industries such as refineries, offshore platforms, LPG terminals and all chemical processing environments.

ATEX Certified

For use in hazardous environments and ATEX and Ex Zones. See page 82 for classifications.



Vibro-Lo™ technology operates with 8x less vibration than standard models.



VL223Ex Needle



VL203Ex Needle



VL303Ex Chisel



Grip	Description	Model Number	Needle/Chisel Supplied	Tool Weight (lbs.)	Blows per minute	CFM @ 90 PSI	Noise Level dB(A)	Vibration Levels m/s ²	Service Kit Part No.
Inline 	VL223Ex Needle Scaler	196.2107	19 qty. / 3mm dia.	5.25	2400	4.0	90.7	2.56	446.2003X
	VL223Ex Chisel Scaler	196.2117	2" (50mm) AlBr	6.5	2400	4.0	90.7	3.69	446.2203X
	VL223Ex Needle Scaler Kit	139.2423	19 qty. / 3mm dia.	5.25	2400	4.0	90.7	2.56	446.2003X
Pistol 	VL203Ex Needle Scaler	196.2207	19 qty. / 3mm dia.	6	2400	4.0	90.7	2.75	446.2003X
	VL203Ex Chisel Scaler	196.2217	2" (50mm) AlBr	7	2400	4.0	90.7	3.33	446.2203X
	VL203Ex Needle Scaler Kit	139.2403	19 qty. / 3mm dia.	6	2400	4.0	90.7	2.75	446.2003X
	VL303Ex Needle Scaler	196.3007	28 qty. / 3mm dia.	7.75	3000	5.0	109.5	2.3	446.3003X
	VL303Ex Chisel Scaler	196.3017	2" (50mm) AlBr	9.4	3000	5.0	109.5	3.7	446.3303X
	VL303Ex Needle Scaler Kit	139.2433	28 qty. / 3mm dia.	7.75	3000	5.0	109.5	2.3	446.3003X

Aluminum bronze chisel supplied with chisel scaler, p/n 704.3110. Copper beryllium chisel-tip needles supplied with needle scalers, box of 19 (p/n 403.1319), box of 28 (p/n 403.1328).

ATEX Kit Features



Copper Beryllium needles – high strength with non-sparking and non-magnetic properties



Dust shroud to protect user from hazardous dust and debris (standard in kits only)



Fall arrestor eliminates the risk of dropping the tool causing injury or equipment damage (standard in kits only)



Needle Scaler Kits include ATEX-Certified needle scaler, extra set of Copper Beryllium needles, dust shroud, corner cuff, edge cuff, flat cuff and fall arrestor.



139.2423



139.2403



139.2433



Optional Accessory
Anti-static lanyard available for use with the fall arrestor (P/N 415.3003)

CAUTION: The user is responsible for following all safety regulations (OSHA, etc.) when choosing the appropriate tool for the hazards present.



ATEX Models for use in Ex Zones and Hazardous Environments.

IMPACT WRENCHES

Pneumatic- and hydraulic-powered impact wrenches, ideal for tightening and removing bolts and screws up to 2-1/8"

CS Unitec's pneumatic and hydraulic impact wrenches are ideal for industrial, mining, assembly and subsea applications.

- High torque
- Best power-to-weight ratio



Caution: User must follow all appropriate safety regulations when choosing a tool for their particular working environment.

ATEX Certified

For use in hazardous environments and ATEX and Ex Zones. See page 82 for classifications.

6 1034 0010
1/2" Pneumatic Impact Wrench
450 ft.-lbs. torque
Multi-step throttle valve



Pneumatic Impact Wrenches

Order No.	Description	Max. Bolt Size	Tightening Torque (Hard)	Weight	Motor Specifications
6 1034 0010	1/2" Square Drive	3/4" (M 20)	450 ft.-lbs.	5.5 lbs.	
6 1316 0050	3/4" Square Drive	1-1/8" (M 30)	995 ft.-lbs.	12.3 lbs.	50CFM @ 90 PSI
6 1316 0070*	3/4" Square Drive	1-1/8" (M 30)	995 ft.-lbs.	12.3 lbs.	50CFM @ 90 PSI
6 1316 0040	1" Square Drive	1-1/8" (M 30)	995 ft.-lbs.	12.6 lbs.	50CFM @ 90 PSI
6 1316 0060*	1" Square Drive	1-1/8" (M 30)	995 ft.-lbs.	12.6 lbs.	50CFM @ 90 PSI
6 1410 0010	1" Square Drive	1-3/8" (M 36)	1620 ft.-lbs.	24.3 lbs.	57CFM @ 90 PSI
6 1417 0040	1-1/2" Square Drive	2-1/8" (M 56)	3240 ft.-lbs.	26.9 lbs.	57CFM @ 90 PSI

*Subsea models for underwater use

Hydraulic Impact Wrenches

Order No.	Description	Max. Bolt Size	Tightening Torque (Hard)	Weight	Motor Specifications
6 1515 0010*	3/4" Square Drive	1" (M 27)	1220 ft.-lbs.	18.1 lbs.	up to 10 GPM @ 2000 PSI
6 1520 0010*	1" Square Drive	1-3/8" (M 36)	1840 ft.-lbs.	25.0 lbs.	up to 10 GPM @ 2000 PSI

*Subsea models for underwater use

ATEX



6 1316 0050
3/4" Pneumatic Impact Wrench
995 ft.-lbs. torque

6 1316 0040
1" Pneumatic Impact Wrench
995 ft.-lbs. torque

See page 82 for information on ATEX



6 1515 0010
3/4" Hydraulic Impact Wrench
1220 ft.-lbs. torque



6 1410 0010
1" Pneumatic Impact Wrench
1620 ft.-lbs. torque

6 1417 0040
1-1/2" Pneumatic Impact Wrench
3240 ft.-lbs. torque



6 1520 0010*
1" Hydraulic Impact Wrench
1840 ft.-lbs. torque

CAUTION: The user is responsible for following all safety regulations (OSHA, etc.) when choosing the appropriate tool for the hazards present.

AXIAL FANS AND AIR MOVERS

Highly efficient, explosion-proof pneumatic- and electric-powered units for ventilating, exhausting and cooling.

CS Unitec's pneumatic and electric axial fans and air movers are ideal for ventilating, exhausting and cooling in applications such as ship holds, underground mining, shipyards, refineries, petrochemical plants, oil platforms, power plants, tunneling, construction and more.



8 1524 0300
Air Axial Fan, 24" dia.
12,353 cfm output @ 90 psi



8 1020 Series
Electric Axial Fans
with protective
grille on inlet side
2118 cfm output

Explosion-Proof
Axial Fans,
Air and Electric,
12" to 24" dia.



Caution: User must follow all appropriate safety regulations when choosing a tool for their particular working environment.



8 1620 0010
Pneumatic Air Mover, 7" dia.
2366 cfm output @ 90 psi



W 70
Pneumatic Air Mover, 6" dia.
3000 cfm output @ 90 psi

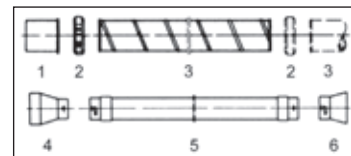
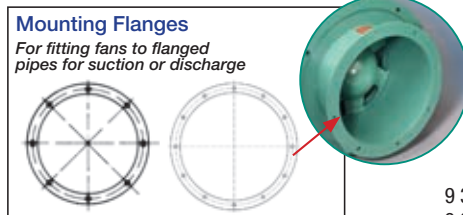
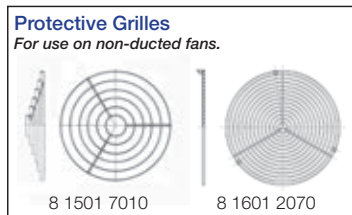
Explosion-Proof Pneumatic Axial Fans and Air Movers

Order No.	Description	Dia.	Power	Volume Output	Air Consumption	Weight lbs.	dBa
8 1521 0300	Axial Fan	12"	Air	3240 cfm	46CFM @ 90 PSI	48.5	101
8 1522 0300	Axial Fan	16"	Air	5720 cfm	75CFM @ 90 PSI	70.4	92
8 1523 0300	Axial Fan	20"	Air	9170 cfm	97CFM @ 90 PSI	101.2	90
8 1524 0300	Axial Fan	24"	Air	12,353 cfm	136CFM @ 90 PSI	127.6	86
8 1603 0300	Axial Fan	12"	Air	2119 cfm	20CFM @ 90 PSI	28.6	85
W 40	Air Mover	4"	Air	1140 cfm	85CFM @ 90 PSI	11	91
W 70	Air Mover	6"	Air	3000 cfm	166CFM @ 90 PSI	22	91
8 1620 0010	Air Mover	7"	Air	2366 cfm	158CFM @ 90 PSI	8	104

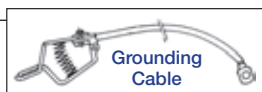
Explosion-Proof Electric Axial Fans

Order No.	Description	Dia.	Power	Volume Output	Weight lbs.	dBa
8 1020 0140	Axial Fan	12"	230/400 V 50 Hz 3-phase	2118 cfm	44	86
8 1020 0870	Axial Fan	12"	230 V 50 Hz single phase	2118 cfm	45	85

Optional Accessories



- 9 3001 0010 Mounting Flange for 12" Axial Fans, DIN 21603 (1 or 2 per fan)
- 9 3001 0020 Mounting Flange for 16" Axial Fans, DIN 21603 (1 or 2 per fan)
- 9 3001 0030 Mounting Flange for 20" Axial Fans, DIN 21603 (1 or 2 per fan)
- 9 3001 0040 Mounting Flange for 24" Axial Fans, DIN 21603 (1 or 2 per fan)
- 8 1501 7010 Protective Grille for 12" Axial Fan (1 or 2 per fan)
- 8 1502 9010 Protective Grille for 16" Axial Fan (1 or 2 per fan)
- 8 1503 9010 Protective Grille for 20" Axial Fan (1 or 2 per fan)
- 8 1504 7010 Protective Grille for 24" Axial Fan (1 or 2 per fan)
- 8 1601 2070 Protective Grille for 8 1020 Fans (1 or 2 per fan)
- 9 3707 0020 Grounding Cable



- 9 3709 0260 Connecting Piece, Antistatic, for 12" Axial Fan (dwg 1)
- 9 3709 0270 Connecting Piece, Antistatic, for 16" Axial Fan (dwg 1)
- 9 3709 0280 Connecting Piece, Antistatic, for 20" Axial Fan (dwg 1)
- 9 3709 0290 Connecting Piece, Antistatic, for 24" Axial Fan (dwg 1)
- 9 3709 0300 Quick-seal Coupling, Antistatic, for 12" Axial Fan (dwg 2)
- 9 3709 0310 Quick-seal Coupling, Antistatic, for 16" Axial Fan (dwg 2)
- 9 3709 0320 Quick-seal Coupling, Antistatic, for 20" Axial Fan (dwg 2)
- 9 3709 0330 Quick-seal Coupling, Antistatic, for 24" Axial Fan (dwg 2)
- 9 3709 0220 Plastic Ducting, 16' long, Antistatic, for 12" Axial Fan (dwg 3)
- 9 3709 0230 Plastic Ducting, 16' long, Antistatic, for 16" Axial Fan (dwg 3)
- 9 3709 0240 Plastic Ducting, 16' long, Antistatic, for 20" Axial Fan (dwg 3)
- 9 3709 0250 Plastic Ducting, 16' long, Antistatic, for 24" Axial Fan (dwg 3)
- 9 3703 0050 Adapter, dia. 12"/8" (dwg 4)
- 9 3709 0130 Plastic Hose, dia. 8", 15' long (dwg 5)
- 9 3702 0030 Suction Nozzle, 12"/8" (dwg 6)

Caution: User must follow all appropriate safety regulations when choosing a tool for their particular working environment.

CAUTION: The user is responsible for following all safety regulations (OSHA, etc.) when choosing the appropriate tool for the hazards present.

SPECIAL TOOLS FOR HYDROGEN GENERATION APPLICATIONS

Pneumatic power tools used in and around highly flammable applications such as hydrogen generation and storage facilities.



See page 44-49
for non-sparking
impact sockets

High-Torque 4-Speed Reversible Drill - Pneumatic

- 1/2" square drive for bolts up to 3/4"
- 4-speed, reversible
- Operating pressure: 90 PSI

Order No.	ATEX Specification	Drill chuck max. dia.	Drilling capacity dia. in steel	Speed (free)	Power	Air consumption	Noise level LpA	Vibration level	Weight
		in.	in.	rpm	HP	CFM	dB(A)	m/s ²	lbs.
2 1362 001C	II2GExhIICT5Gb	0.5	1.18	50/650/ 850	1.3	40	84	<2.5	8.2

Optional air tool line conditioner to displace moisture, Part No. 9109 (5 liters).
* Specifications subject to change

Performance data at an operating pressure of 90 PSI.

SDS Plus Rotary Hammer Drill - Pneumatic

- Hammer drill holes in concrete, brick and masonry
- Rotary operation for drilling steel and wood
- Safety clutch protects against overloading and jamming
- Operating pressure: 90 PSI



Order No.	ATEX Specification	Tool holder	Drilling capacity dia. in concrete	Speed (free)	Percussion	Power	Air consumption	Noise level LpA	Vibration level	Weight
			in.	rpm	rpm	HP	CFM	dB(A)	m/s ²	lbs.
2 2404 001C	II2GExhIICT6Gb	SDS-plus	0.19-1.10	625	3,000	0.67	21	93	4.5	13.9

Optional air tool line conditioner to displace moisture, Part No. 9109 (5 liters).
* Specifications subject to change

Performance data at an operating pressure of 90 PSI.

High-Torque Slow-Speed Drill with Centering - Pneumatic

- Steplessly adjustable with safety lever valve
- Operating pressure: 90 PSI



Order No.	ATEX Specification	Square Drive	Valve type	Direction of rotation	Max. drilling dia. in steel	Speed under load	Power	Air consumption	Noise level LpA	Vibration level	Weight
					in.	rpm	HP	CFM	dB(A)	m/s ²	lbs.
2 2080 001C	II2GExhIICT6Gb	3/4"	Safety lever valve	right	1.26	20	1.3	46	92.0	3.3	28.7

Optional air tool line conditioner to displace moisture, Part No. 9109 (5 liters).
* Specifications subject to change

Performance data at an operating pressure of 90 PSI.

CAUTION: The user is responsible for following all safety regulations (OSHA, etc.) when choosing the appropriate tool for the hazards present.

Toll-Free in U.S. 1-800-700-5919 • +1-203-853-9522 • Fax: +1-203-853-9921 • CSunitec.com

SPECIAL TOOLS FOR HYDROGEN GENERATION APPLICATIONS



Lightweight, High-Torque Impact Wrench - Pneumatic

- 1/2" square drive for bolts up to 3/4"
- Operating pressure: 90 PSI

Order No.	ATEX Specification	Square drive	for screws up to	Max. Torque**	Air consumption	Distance center to outer edge	Hose ID	Noise level LpA	Vibration level	Weight
			in.	ft./lbs.	CFM	in.	in.	dB(A)	m/s ²	lbs.
6 1034 001C	II2GExhIICT6Gb	1/2"	3/4"-10	449.91	11	1.87	.39	90	2.6	5.5

Optional air tool line conditioner to displace moisture, Part No. 9109 (5 liters).

* Specifications subject to change **applied on screw strength class 8.8

Performance data at an operating pressure of 90 PSI.

See pages 44-49 for non-sparking impact sockets



Compact, High-Torque Impact Wrench - Pneumatic

- For bolts up to 1-1/8"
- Operating pressure: 90 PSI

Order No.	ATEX Specification	Square drive	for screws up to	Max. Torque**	Air consumption	Distance center to outer edge	Hose ID	Noise level LpA	Vibration level	Weight
			in.	ft./lbs.	CFM	in.	in.	dB(A)	m/s ²	lbs.
6 1316 005C	II2GExhIICT6Gb	3/4"	1-1/8"-7	995.71	49	1.77	.51	96	4.5	12.3
6 1316 004C	II2GExhIICT6Gb	1"	1-1/8"-7	995.71	49	1.77	.51	96	4.5	12.5

Optional air tool line conditioner to displace moisture, Part No. 9109 (5 liters).

* Specifications subject to change **applied on screw strength class 8.8

Performance data at an operating pressure of 90 PSI.

See pages 44-49 for non-sparking impact sockets

Powerful, High-Torque Impact Wrench with Second Handle - Pneumatic

- For bolts up to 1-1/8"
- Second handle
- Operating pressure: 90 PSI



Order No.	ATEX Specification	Square drive	for screws up to	Max. Torque**	Air consumption	Distance center to outer edge	Hose ID	Noise level LpA	Vibration level	Weight
			in.	ft./lbs.	CFM	in.	in.	dB(A)	m/s ²	lbs.
6 1410 001C	II2GExhIICT6Gb	1"	1-3/8"-6	1622.64	57	2.24	.51	92	6.2	24.2

Optional air tool line conditioner to displace moisture, Part No. 9109 (5 liters).

* Specifications subject to change **applied on screw strength class 8.8

Performance data at an operating pressure of 90 PSI.

CAUTION: The user is responsible for following all safety regulations (OSHA, etc.) when choosing the appropriate tool for the hazards present.

SPECIAL TOOLS FOR HYDROGEN GENERATION APPLICATIONS

High-Torque Nut Runners - Pneumatic

- Air outlet for motor cooling
- Lever valve
- Operating pressure: 90 PSI



Order No.	ATEX Specification	Tool Holder (female)	Valve type	Power	Air consumption	Torque	Speed under load	Noise level LpA	Vibration level	Weight
				HP	CFM	ft./lbs.	rpm	dB(A)	m/s ²	lbs.
3 6212 005C	II2GExhIICT6Gb	3/4"	Lever	0.94	46	169.64	35	91	<2.5	13.7
6 1014 005C	II2GExhIICT6Gb	3/4"	Lever	0.94	46	48.68	100	89	<2.5	11.5
6 1055 001C	II2GExhIICT6Gb	3/4"	Lever	0.94	46	206.52	22	80.5	<2.5	12.6
6 1056 001C	II2GExhIICT6Gb	3/4"	Lever	0.94	46	68.38	67	80.5	<2.5	13.0
6 1057 001C	II2GExhIICT6Gb	3/4" (1/2")	Lever	0.94	46	36.88	125	80.5	<2.5	12.8
6 1061 001C	II2GExhIICT6Gb	3/4"	Lever	0.94	46	280	22	80.5	<2.5	12.8

Optional air tool line conditioner to displace moisture, Part No. 9109 (5 liters).

* Specifications subject to change **applied on screw strength class 8.8

Performance data at an operating pressure of 90 PSI.

Stainless Steel Air Movers - Pneumatic

- Maintenance and wear-free, no rotating parts
- Integrated handle
- Operating pressure: 29-90 PSI



Order No.	ATEX Specification	Nominal dia. (outer)	Length	Volume flow (unrestricted) at 90 PSI			Air consumption	Connection (female)	Noise level LpA	Vibration level	Weight
		in.	in.	CFM	CFM	CFM	CFM		dB(A)	m/s ²	lbs.
8 1634 001C	II2GExhIICT6Gb	4	16.14	762	642	540	56-81	G 1/2"	100.8	<2.5	13.7
8 1636 001C	II2GExhIICT6Gb	5.08	16.73	967	766	657	60-87	G 1/2"	101.1	<2.5	11.5
8 1638 001C	II2GExhIICT6Gb	6.06	17.13	1854	1660	1353	98-155	G 1/2"	103.8	<2.5	12.6
8 1640 001C	II2GExhIICT6Gb	6.63	17.72	2083	1914	1653	102-158	G 1/2"	104.4	<2.5	13.0
8 1642 001C	II2GExhIICT6Gb	8.03	17.72	2878	2401	1995	222-342	G 3/4"	115.8	<2.5	12.8
8 1644 001C	II2GExhIICT6Gb	8.63	17.72	2949	2543	2147	226-335	G 3/4"	116.3	<2.5	12.8

Optional air tool line conditioner to displace moisture, Part No. 9109 (5 liters).

* Specifications subject to change

Portable Band Saw - Pneumatic

- Cut steel, stainless, Inconel, chrome, Hastelloy, aluminum, copper, iron, fiberglass, plastic, wood and more
- Operating pressure: 90 PSI



Order No.	ATEX Specification	Power	Air Consumption	Type	Cutting capacity max. dia.	Cutting capacity max. dia.	Noise level LpA/LwA	Vibration level	Weight
		HP	CFM	in.	in.	in.	dB(A)	m/s ²	lbs.
5 6031 001C	II2GExhIICT6Gb	1.34	42	7" x 7"	7.09	7.09 x 7.09	82/91	<2.5	28.7

Optional air tool line conditioner to displace moisture, Part No. 9109 (5 liters).

* Specifications subject to change

Performance data at an operating pressure of 90 PSI.

CAUTION: The user is responsible for following all safety regulations (OSHA, etc.) when choosing the appropriate tool for the hazards present.

Toll-Free in U.S. 1-800-700-5919 • +1-203-853-9522 • Fax: +1-203-853-9921 • CSunitec.com

SPECIAL TOOLS FOR HYDROGEN GENERATION APPLICATIONS

Reciprocating Saw - Pneumatic

- Cut steel pipe and channel 1/2" to 6" dia., plastic pipe to 8" dia.
- 1.3 HP motor
- Operating pressure: 90 PSI



Order No.	ATEX Specification	Power	Air Consumption	Stroke	Number of strokes (free)	Noise level LpA/LwA	Vibration level	Weight
		HP	CFM	in.	rpm	dB(A)	m/s ²	lbs.
5 1217 001C	II2GExhIICT5Gb	1.3	46	1.10	180	180x 180	12.3 (chipboard) 16.3 (wooden beam)	8.8

Optional air tool line conditioner to displace moisture, Part No. 9109 (5 liters).
* Specifications subject to change

Performance data at an operating pressure of 90 PSI.

Hacksaw - Pneumatic

- Roll or lever throttle
- Compact size for cutting in confined spaces
- Operating pressure: 90 PSI



Order No.	ATEX Specification	Housing material	Valve type	Power	Number of strokes	Stroke	Air consumption	Noise level LpA	Vibration level	Connection	Hose ID min.	Weight
				HP	rpm	in.	CFM	dB(A)	m/s ²		in.	lbs.
5 1212 001C	II2GExhIICT5Gb	aluminum	Twist	1.5	360	2.36	51.21	76	<2.5	R 3/4" male	0.5	16.5
5 1212 005C	II2GExhIICT5Gb	aluminum	Lever	1.5	360	2.36	51.21	76	<2.5	R 3/4" male	0.5	15.4

Optional air tool line conditioner to displace moisture, Part No. 9109 (5 liters).
* Specifications subject to change

Performance data at an operating pressure of 90 PSI.

Clamps available for 90° cutting. Model No. 5 1208 9980 self-feeding clamp for roll throttle model 5 1212 001C. Contact us for more information.

Pipe Cutting Machine - Pneumatic

- Low-speed cutting for pipes up to 96" dia.
- Ideal for materials, including:
 - Ductile iron
 - Concrete
 - Cement
 - Clay
 - Non-ferrous metal
 - Plastics
 - PE
 - PVC
 - GRP
- Operating pressure: 90 PSI



Order No.	ATEX Specification	Power	Air consumption	Max. saw blade dia.	Tool holder	Speed	Max. cutting depth	Height	Noise level LpA	Vibration level	Weight
		HP	CFM	in.	in.	rpm	in.	in.	dB(A)	m/s ²	lbs.
5 8022 005C	II2GExhIICT6Gb	2.4	78	7.09	0.87 / 1.18	350	1.97	9.84	98	<2.5	28.7

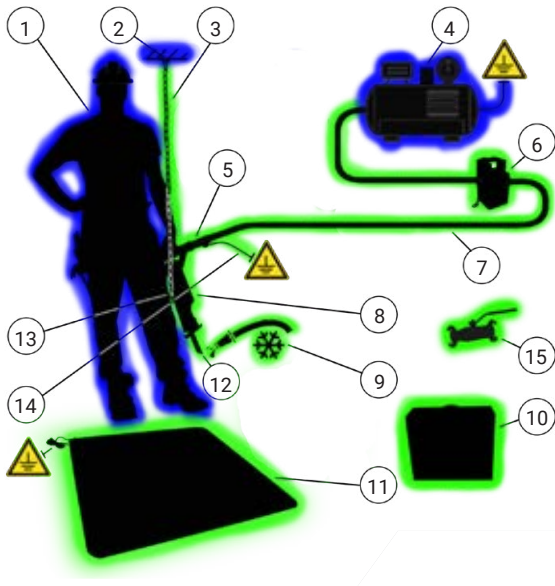
Optional air tool line conditioner to displace moisture, Part No. 9109 (5 liters).
* Specifications subject to change

Performance data at an operating pressure of 90 PSI.

Carriages and chain tensioners for 5 8022 005C pipe cutting machine models are specific to hydrogen applications. Contact us for more information

CAUTION: The user is responsible for following all safety regulations (OSHA, etc.) when choosing the appropriate tool for the hazards present.

Toll-Free in U.S. 1-800-700-5919 • +1-203-853-9522 • Fax: +1-203-853-9921 • CSunitec.com



Item	Hazard			Description	Notes
	Sparks	Static Charge	Heat		
1	●	●		Personal protective equipment	<ul style="list-style-type: none"> All components used must meet the safety requirements for use in the ATEX zone IIC. The employer must ensure that only approved components are used. The assessment and assignment of the risk category must be done by the employer. The employer must ensure the proper condition of the tools and components at all times. Before each use, a skilled person has to check the safety devices, components, tools, and PPE with regard to their proper condition for use. Damaged and inappropriate components have to be removed immediately from the hazardous area
2	●	●		Suspension	
3	●	●		Retaining chain with hook	
4	●	●	●	Air compressor	
5	●	●		Nipple assembly	
6	●	●		Service unit	
7	●	●		Pneumatic hose	
8	●	●	●	Machine	
9	●		●	Water cooling	
10	●	●		ESD carrying case	
11		●		ESD safety mat	
12	●	●	●	Tool	
13	●	●		Butt strap	
14	●	●		Grounding cable	
15	●	●	●	Ball valve assembly	

Grounding Cable

- Prevent potential sparks from static electricity

9 3707 0020 Grounding cable, 5' in length including gripper

* Specifications subject to change



Butt Strap

- Mounts directly on reciprocating saw and impact wrenches

5 1217 7080 For 5 1217 001C reciprocating saw

6 1316 9020 For 6 1316 004C and 6 1316 005C impact wrenches

6 1410 9020 For 6 1410 001C impact wrench

* Specifications subject to change



Nipple Assembly

- Mounts on air inlet for connecting grounding cable

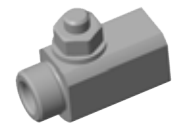
9 2205 2330 R1/4" male - R1/4" female connecting thread

9 2205 2340 R3/8" male - R3/8" female connecting thread

9 2205 2320 R1/2" male - R1/2" female connecting thread

9 2205 2350 R3/4" male - R3/4" female connecting thread

* Specifications subject to change

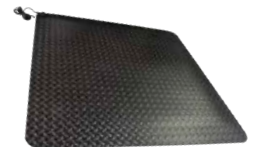


Safety Mat

- Non-slip electrostatic discharge safety mat (R9 to DIN 51130 and BG rule BGR181)
- Includes grounding cable

9 9911 0170 36" x 36" x 1/2" antistatic mat with grounding cable

* Specifications subject to change



Electrostatic Discharge Carrying Case

- Powder coated
- Antistatic lining

9 9910 006C For models 2 1362, 2 2404, 5 1217, 3 6212, 6 1014, 6 1055, 6 1056, 6 1057, 6 1061, 6 1034, 6 1316 and 6 1410

9 9910 011C For models 5 6031, 5 1212, 5 8022 and 2 2080

* Specifications subject to change



CAUTION: The user is responsible for following all safety regulations (OSHA, etc.) when choosing the appropriate tool for the hazards present.

SPECIAL TOOLS FOR UNDERWATER USE

Hydraulic- and pneumatic-powered tools for use in subsea applications, including construction, maintenance, demolition and salvage applications in and around shipyards, offshore oil, power plants and other underwater jobsites.



Reciprocating Saws

Air • Hydraulic

- Best power-to-weight ratios in the industry
- Optional clamps for 90° cutting



Scan to view complete line of hydraulic and pneumatic tools for use underwater.



Chain Saws

Air • Hydraulic

- Bars up to 40" in length
- Chain brakes for operator safety



Hacksaws

Air • Hydraulic

- Cut up to 30" dia. pipe
- Fully-sealed hydraulic model – safer for use in nuclear power plants and sensitive jobsites



Band Saws

Hydraulic • Air

- Cut up to 8" dia.
- Optional vice clamps available



Pipe Cutting Machines

Air • Hydraulic

- Cut pipe up to 96" dia.
- Cut underground with minimal excavation



Circular Saws

Air • Hydraulic

- Up to 12-5/8" dia.
- Cut concrete and metal

Magnetic Drills

Hydraulic • Air

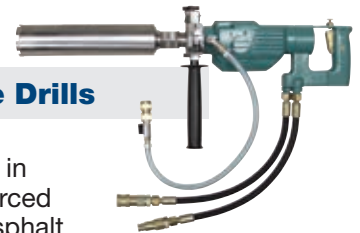
- Drill holes up to 4" dia.
- Tap holes up to 1" dia.



Diamond Core Drills

Air • Hydraulic

- Holes up to 12" in concrete, reinforced concrete and asphalt
- Rugged 3-speed gearboxes



Rotary Hammer Drills

Air • Hydraulic

- Use to drill concrete, brick, masonry, steel and wood
- SDS Plus and SDS Max models



Grinders

Hydraulic

- For use with a variety of wheels, brushes and attachments



CAUTION: The user is responsible for following all safety regulations (OSHA, etc.) when choosing the appropriate tool for the hazards present.

Toll-Free in U.S. 1-800-700-5919 • +1-203-853-9522 • Fax: +1-203-853-9921 • CSunitec.com